



ARY2 rabbit pAb

Catalog No	BYab-12337
Isotype	IgG
Reactivity	Human; Mouse;Rat
Applications	WB
Gene Name	NAT2 AAC2
Protein Name	ARY2
Immunogen	Synthesized peptide derived from human ARY2 AA range: 80-130
Specificity	This antibody detects endogenous levels of ARY2 at Human/Mouse/Rat
Formulation	Liquid in PBS containing 50% glycerol, 0.5% BSA and 0.02% sodium azide.
Source	Polyclonal, Rabbit,IgG
Purification	The antibody was affinity-purified from rabbit serum by affinity-chromatography using specific immunogen.
Dilution	WB 1: 500-2000
Concentration	1 mg/ml
Purity	≥90%
Storage Stability	-20°C/1 year
Synonyms	
Observed Band	
Cell Pathway	Cytoplasm.
Tissue Specificity	
Function	catalytic activity:Acetyl-CoA + an arylamine = CoA + an N-acetylarlyamine.,disease:Genetic variations in NAT2 determine N-acetylation polymorphism by a low or high NAT activity in the liver [MIM:243400]. It has been implicated in the action and toxicity of amine-containing drugs, and in the susceptibility to bladder cancer and systemic lupus erythematosus. This isozyme is responsible for this polymorphism.,function:Participates in the detoxification of a plethora of hydrazine and arylamine drugs. Catalyzes the N- or O-acetylation of various arylamine and heterocyclic amine substrates and is able to bioactivate several known carcinogens.,online information:NAT alleles,online information:The Singapore human mutation and polymorphism database,similarity:Belongs to the arylamine N-acetyltransferase family.,

Nanjing BYabscience technology Co.,Ltd



Background

This gene encodes an enzyme that functions to both activate and deactivate arylamine and hydrazine drugs and carcinogens. Polymorphisms in this gene are responsible for the N-acetylation polymorphism in which human populations segregate into rapid, intermediate, and slow acetylator phenotypes. Polymorphisms in this gene are also associated with higher incidences of cancer and drug toxicity. A second arylamine N-acetyltransferase gene (NAT1) is located near this gene (NAT2). [provided by RefSeq, Jul 2008],

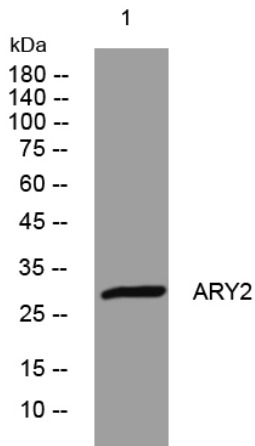
matters needing attention

Avoid repeated freezing and thawing!

Usage suggestions

This product can be used in immunological reaction related experiments. For more information, please consult technical personnel.

Products Images



Western blot analysis of lysates from MCF-7 cells, primary antibody was diluted at 1:1000, 4° over night