



ST1B1 rabbit pAb

Catalog No	BYab-12333
Isotype	IgG
Reactivity	Human; Mouse;Rat
Applications	WB
Gene Name	SULT1B1 ST1B2 SULT1B2
Protein Name	ST1B1
Immunogen	Synthesized peptide derived from human ST1B1 AA range: 223-273
Specificity	This antibody detects endogenous levels of ST1B1 at Human/Mouse/Rat
Formulation	Liquid in PBS containing 50% glycerol, 0.5% BSA and 0.02% sodium azide.
Source	Polyclonal, Rabbit,IgG
Purification	The antibody was affinity-purified from rabbit serum by affinity-chromatography using specific immunogen.
Dilution	WB 1: 500-2000
Concentration	1 mg/ml
Purity	≥90%
Storage Stability	-20°C/1 year
Synonyms	
Observed Band	
Cell Pathway	Cytoplasm .
Tissue Specificity	Highly expressed in the liver, peripheral blood leukocytes, colon (mucosal lining), small intestine (jejunum) and spleen. A lesser expression was observed in the lung, placenta and thymus.
Function	function:Catalyzes the sulfate conjugation of many hormones, neurotransmitters, drugs and xenobiotic compounds. Sulfonation increases the water solubility of most compounds, and therefore their renal excretion, but it can also result in bioactivation to form active metabolites. Sulfates dopamine, small phenols such as 1-naphthol and p-nitrophenol and thyroid hormones, including 3,3'-diiodothyronine, triiodothyronine, reverse triiodothyronine and thyroxine.,similarity:Belongs to the sulfotransferase 1 family.,subunit:Monomer.,tissue specificity:Highly expressed in the liver, peripheral blood leukocytes, colon (mucosal lining), small intestine (jejunum) and spleen. A lesser expression was observed in the lung, placenta and thymus.,

Nanjing BYabscience technology Co.,Ltd



Background

Sulfotransferase enzymes catalyze the sulfate conjugation of many hormones, neurotransmitters, drugs, and xenobiotic compounds. These cytosolic enzymes are different in their tissue distributions and substrate specificities. The gene structure (number and length of exons) is similar among family members. However, the total genomic length of this gene is greater than that of other SULT1 genes. [provided by RefSeq, Jul 2008],

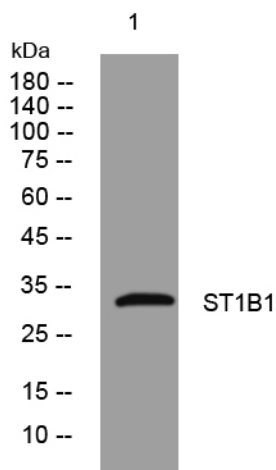
matters needing attention

Avoid repeated freezing and thawing!

Usage suggestions

This product can be used in immunological reaction related experiments. For more information, please consult technical personnel.

Products Images



Western blot analysis of lysates from PC-12 cells, primary antibody was diluted at 1:1000, 4° over night