



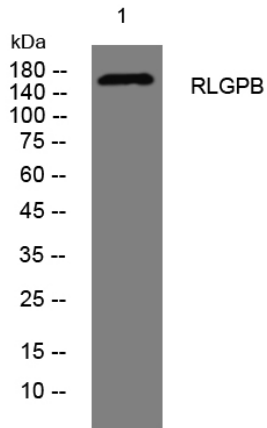
RLGPB rabbit pAb

Catalog No	BYab-12321
Isotype	IgG
Reactivity	Human; Mouse;Rat
Applications	WB
Gene Name	RALGAPB KIAA1219
Protein Name	RLGPB
Immunogen	Synthesized peptide derived from human RLGPB AA range: 1435-1485
Specificity	This antibody detects endogenous levels of RLGPB at Human/Mouse/Rat
Formulation	Liquid in PBS containing 50% glycerol, 0.5% BSA and 0.02% sodium azide.
Source	Polyclonal, Rabbit,IgG
Purification	The antibody was affinity-purified from rabbit serum by affinity-chromatography using specific immunogen.
Dilution	WB 1: 500-2000
Concentration	1 mg/ml
Purity	≥90%
Storage Stability	-20°C/1 year
Synonyms	
Observed Band	
Cell Pathway	
Tissue Specificity	Highly expressed in brain, mostly in amygdala.
Function	
Background	
matters needing attention	Avoid repeated freezing and thawing!
Usage suggestions	This product can be used in immunological reaction related experiments. For more information, please consult technical personnel.

Nanjing BYabscience technology Co.,Ltd



Products Images



Western blot analysis of lysates from HuvEc cells,
primary antibody was diluted at 1:1000, 4° over night