



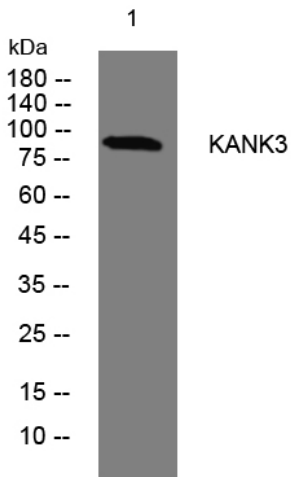
KANK3 rabbit pAb

Catalog No	BYab-12316
Isotype	IgG
Reactivity	Human; Mouse
Applications	WB
Gene Name	KANK3 ANKRD47
Protein Name	KANK3
Immunogen	Synthesized peptide derived from human KANK3 AA range: 135-185
Specificity	This antibody detects endogenous levels of KANK3 at Human/Mouse
Formulation	Liquid in PBS containing 50% glycerol, 0.5% BSA and 0.02% sodium azide.
Source	Polyclonal, Rabbit,IgG
Purification	The antibody was affinity-purified from rabbit serum by affinity-chromatography using specific immunogen.
Dilution	WB 1: 500-2000
Concentration	1 mg/ml
Purity	≥90%
Storage Stability	-20°C/1 year
Synonyms	
Observed Band	
Cell Pathway	
Tissue Specificity	Strongly expressed in breast, liver, lung, skeletal muscle and kidney.
Function	similarity:Contains 5 ANK repeats.,
Background	
matters needing attention	Avoid repeated freezing and thawing!
Usage suggestions	This product can be used in immunological reaction related experiments. For more information, please consult technical personnel.

Nanjing BYabscience technology Co.,Ltd



Products Images



Western blot analysis of lysates from 293T cells,
primary antibody was diluted at 1:1000, 4° over night