



PHAR3 rabbit pAb

Catalog No	BYab-12306
Isotype	IgG
Reactivity	Human; Mouse;Rat
Applications	WB;ELISA;IHC
Gene Name	PHACTR3 C20orf101 SCAPIN1
Protein Name	PHAR3
Immunogen	Synthesized peptide derived from human PHAR3 AA range: 260-310
Specificity	This antibody detects endogenous levels of PHAR3 at Human/Mouse/Rat
Formulation	Liquid in PBS containing 50% glycerol, 0.5% BSA and 0.02% sodium azide.
Source	Polyclonal, Rabbit,IgG
Purification	The antibody was affinity-purified from rabbit serum by affinity-chromatography using specific immunogen.
Dilution	WB 1:500-2000;IHC-p 1:50-300; ELISA 2000-20000
Concentration	1 mg/ml
Purity	≥90%
Storage Stability	-20°C/1 year
Synonyms	
Observed Band	
Cell Pathway	Nucleus matrix. Localized to the nuclear matrix-intermediate filament scaffold. Isoform 2 is also found in some cytoplasmic extensions.
Tissue Specificity	Abundantly expressed in brain. Also found in several tumors such as lung carcinomas, nervous tumors and HL-60 leukemia cells. Isoform 3 is the major form in U-937, GOTO and HL-60 leukemia cells.
Function	induction:Down-regulated in HL-60 leukemia cells by RA, PMA and dimethyl sulfoxide.,similarity:Belongs to the phosphatase and actin regulator family.,similarity:Contains 4 RPEL repeats.,subcellular location:Localized to the nuclear matrix-intermediate filament scaffold. Isoform 2 is also found in some cytoplasmic extensions.,subunit:Binds actin and PPP1CA; thus inhibiting the protein phosphatase 1 (PP1) activity.,tissue specificity:Abundantly expressed in brain. Also found in several tumors such as lung carcinomas, nervous tumors and HL-60 leukemia cells. Isoform 3 is the major form in U937, GOTO and HL-60 leukemia cells.,

Nanjing BYabscience technology Co.,Ltd



Background

This gene encodes a member of the phosphatase and actin regulator protein family. The encoded protein is associated with the nuclear scaffold in proliferating cells, and binds to actin and the catalytic subunit of protein phosphatase-1, suggesting that it functions as a regulatory subunit of protein phosphatase-1. Alternative splicing results in multiple transcript variants. [provided by RefSeq, Jul 2013],

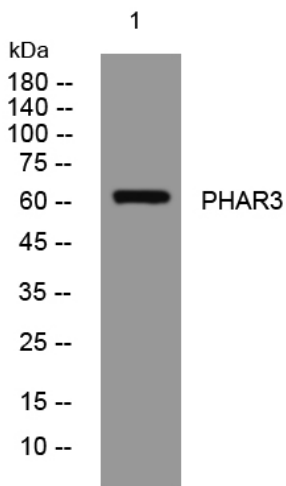
matters needing attention

Avoid repeated freezing and thawing!

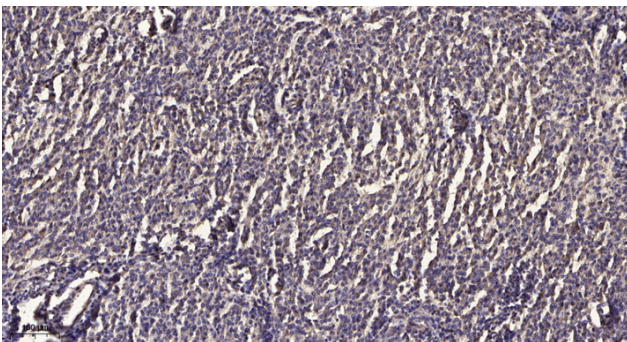
Usage suggestions

This product can be used in immunological reaction related experiments. For more information, please consult technical personnel.

Products Images



Western blot analysis of lysates from MCF-7 cells, primary antibody was diluted at 1:1000, 4° over night



Immunohistochemical analysis of paraffin-embedded human meningioma. 1, Antibody was diluted at 1:200(4° overnight). 2, Tris-EDTA,pH9.0 was used for antigen retrieval. 3,Secondary antibody was diluted at 1:200(room temperature, 45min).