



ABR rabbit pAb

Catalog No	BYab-12298
Isotype	IgG
Reactivity	Human; Mouse
Applications	WB
Gene Name	ABR
Protein Name	ABR
Immunogen	Synthesized peptide derived from human ABR AA range: 393-443
Specificity	This antibody detects endogenous levels of ABR at Human/Mouse
Formulation	Liquid in PBS containing 50% glycerol, 0.5% BSA and 0.02% sodium azide.
Source	Polyclonal, Rabbit,IgG
Purification	The antibody was affinity-purified from rabbit serum by affinity-chromatography using specific immunogen.
Dilution	WB 1: 500-2000
Concentration	1 mg/ml
Purity	≥90%
Storage Stability	-20°C/1 year
Synonyms	
Observed Band	
Cell Pathway	Cell projection, dendritic spine . Cell projection, axon . Cell junction, synapse .
Tissue Specificity	Highly enriched in the brain. Much weaker expression in heart, lung and muscle.
Function	function:GTPase-activating protein for RAC and CDC42. Promotes the exchange of RAC or CDC42-bound GDP by GTP, thereby activating them.,similarity:Contains 1 C2 domain.,similarity:Contains 1 DH (DBL-homology) domain.,similarity:Contains 1 PH domain.,similarity:Contains 1 Rho-GAP domain.,tissue specificity:Highly enriched in the brain. Much weaker expression in heart, lung and muscle.,
Background	This gene encodes a protein that is similar to the protein encoded by the breakpoint cluster region gene located on chromosome 22. The protein encoded by this gene contains a GTPase-activating protein domain, a domain found in members of the Rho family of GTP-binding proteins. Functional studies in mice determined that this protein plays a role in vestibular morphogenesis. Alternatively

Nanjing BYabscience technology Co.,Ltd



spliced transcript variants have been reported for this gene. [provided by RefSeq, Feb 2012],

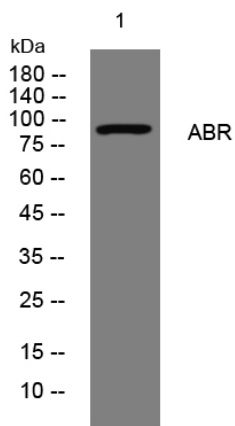
matters needing attention

Avoid repeated freezing and thawing!

Usage suggestions

This product can be used in immunological reaction related experiments. For more information, please consult technical personnel.

Products Images



Western blot analysis of lysates from HeLa cells, primary antibody was diluted at 1:1000, 4° over night