



# LY65C rabbit pAb

<b>Catalog No</b>	BYab-12289
<b>Isotype</b>	IgG
<b>Reactivity</b>	Human; Mouse;Rat
<b>Applications</b>	WB
<b>Gene Name</b>	LY6G5C C6orf20 G5C NG33
<b>Protein Name</b>	LY65C
<b>Immunogen</b>	Synthesized peptide derived from human LY65C AA range: 66-116
<b>Specificity</b>	This antibody detects endogenous levels of LY65C at Human/Mouse/Rat
<b>Formulation</b>	Liquid in PBS containing 50% glycerol, 0.5% BSA and 0.02% sodium azide.
<b>Source</b>	Polyclonal, Rabbit,IgG
<b>Purification</b>	The antibody was affinity-purified from rabbit serum by affinity-chromatography using specific immunogen.
<b>Dilution</b>	WB 1: 500-2000
<b>Concentration</b>	1 mg/ml
<b>Purity</b>	≥90%
<b>Storage Stability</b>	-20°C/1 year
<b>Synonyms</b>	
<b>Observed Band</b>	
<b>Cell Pathway</b>	Secreted .
<b>Tissue Specificity</b>	Detected in T-cell lines and fetal and adult lung.
<b>Function</b>	caution:It is uncertain whether Met-1 or Met-4 is the initiator.,function:May have a role in hematopoietic cell differentiation.,PTM:N-glycosylated.,similarity:Contains 1 UPAR/Ly6 domain.,subunit:Forms oligomers.,tissue specificity:Detected in T-cell lines and fetal and adult lung.,
<b>Background</b>	LY6G5C belongs to a cluster of leukocyte antigen-6 (LY6) genes located in the major histocompatibility complex (MHC) class III region on chromosome 6. Members of the LY6 superfamily typically contain 70 to 80 amino acids, including 8 to 10 cysteines. Most LY6 proteins are attached to the cell surface by a glycosylphosphatidylinositol (GPI) anchor that is directly involved in signal transduction (Mallya et al., 2002 [PubMed 12079290]).[supplied by OMIM, Mar 2008],

Nanjing BYabscience technology Co.,Ltd



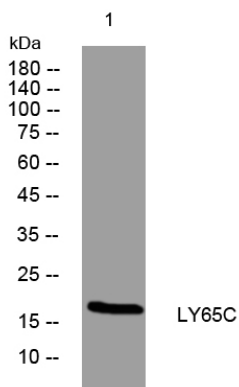
**matters needing attention**

Avoid repeated freezing and thawing!

**Usage suggestions**

This product can be used in immunological reaction related experiments. For more information, please consult technical personnel.

## Products Images



Western blot analysis of lysates from U2OS cells, primary antibody was diluted at 1:1000, 4° over night