



# SUV3 rabbit pAb

<b>Catalog No</b>	BYab-12285
<b>Isotype</b>	IgG
<b>Reactivity</b>	Human; Mouse;Rat
<b>Applications</b>	WB;ELISA;IHC
<b>Gene Name</b>	SUPV3L1 SUV3
<b>Protein Name</b>	SUV3
<b>Immunogen</b>	Synthesized peptide derived from human SUV3 AA range: 443-493
<b>Specificity</b>	This antibody detects endogenous levels of SUV3 at Human/Mouse/Rat
<b>Formulation</b>	Liquid in PBS containing 50% glycerol, 0.5% BSA and 0.02% sodium azide.
<b>Source</b>	Polyclonal, Rabbit,IgG
<b>Purification</b>	The antibody was affinity-purified from rabbit serum by affinity-chromatography using specific immunogen.
<b>Dilution</b>	WB 1:500-2000;IHC-p 1:50-300; ELISA 2000-20000
<b>Concentration</b>	1 mg/ml
<b>Purity</b>	≥90%
<b>Storage Stability</b>	-20°C/1 year
<b>Synonyms</b>	
<b>Observed Band</b>	
<b>Cell Pathway</b>	Nucleus . Mitochondrion matrix . Mitochondrion matrix, mitochondrion nucleoid .
<b>Tissue Specificity</b>	Broadly expressed.
<b>Function</b>	cofactor:Magnesium or manganese.,enzyme regulation:Helicase activity toward DNA substrate is inhibited by micromolar concentrations of 5,6-dichloro-1-(beta-D-ribofuranosyl)benzotriazole (DRBT) and 4,5,6,7-tetrabromobenzotriazole (TBBT). Helicase activity toward RNA substrate is inhibited by elevated concentrations of TBBT. Inhibited by some ring-expanded nucleoside analogs.,function:ATPase and DNA/RNA helicase able to unwind DNA/DNA, DNA/RNA and RNA/RNA duplexes in the 5'-3' direction. May protect cells from apoptosis.,similarity:Belongs to the helicase family.,similarity:Contains 1 helicase ATP-binding domain.,similarity:Contains 1 helicase C-terminal domain.,subunit:Interacts with HBXIP.,tissue specificity:Broadly expressed.,

Nanjing BYabscience technology Co.,Ltd



## Background

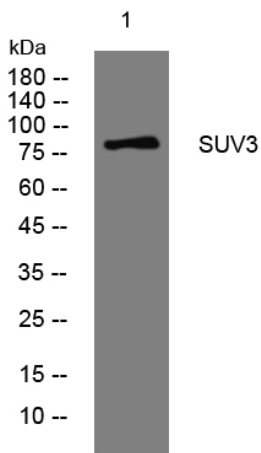
### matters needing attention

Avoid repeated freezing and thawing!

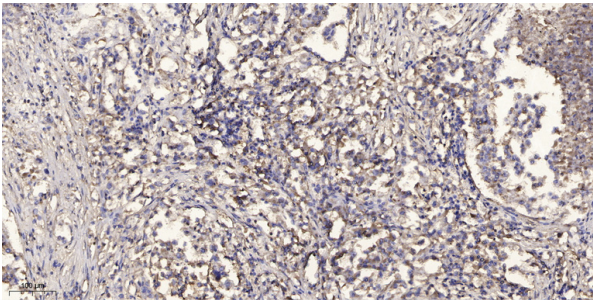
### Usage suggestions

This product can be used in immunological reaction related experiments. For more information, please consult technical personnel.

## Products Images



Western blot analysis of lysates from MDA-MB cells, primary antibody was diluted at 1:1000, 4° over night



Immunohistochemical analysis of paraffin-embedded human Squamous cell carcinoma of lung. 1, Antibody was diluted at 1:200(4° overnight). 2, Tris-EDTA,pH9.0 was used for antigen retrieval. 3, Secondary antibody was diluted at 1:200(room temperature, 45min).