



ROMO1 rabbit pAb

Catalog No	BYab-12279
Isotype	IgG
Reactivity	Human; Mouse
Applications	IHC;IF
Gene Name	ROMO1 C20orf52
Protein Name	ROMO1
Immunogen	Synthesized peptide derived from human ROMO1 AA range: 17-67
Specificity	This antibody detects endogenous levels of ROMO1 at Human/Mouse
Formulation	Liquid in PBS containing 50% glycerol, 0.5% BSA and 0.02% sodium azide.
Source	Polyclonal, Rabbit,IgG
Purification	The antibody was affinity-purified from rabbit serum by affinity-chromatography using specific immunogen.
Dilution	IHC-p 1: 50-200. IF 1:50-200
Concentration	1 mg/ml
Purity	≥90%
Storage Stability	-20°C/1 year
Synonyms	
Observed Band	
Cell Pathway	Mitochondrion inner membrane ; Single-pass membrane protein .
Tissue Specificity	Up-regulated in a number of cancer cell lines when compared to a normal lung fibroblast cell line. Highly expressed in brain tumors.
Function	developmental stage:Expression increases in senescent cells.,function:Induces production of reactive oxygen species (ROS) which are necessary for cell proliferation. May play a role in inducing oxidative DNA damage and replicative senescence.,induction:By the anticancer drug fluorouracil (5FU).,miscellaneous:Enforced expression in IMR-90 cells leads to increased levels of ROS and induces premature cell senescence and nuclear DNA damage.,similarity:Belongs to the MGR2 family.,tissue specificity:Up-regulated in a number of cancer cell lines when compared to a normal lung fibroblast cell line.,
Background	The protein encoded by this gene is a mitochondrial membrane protein that is responsible for increasing the level of reactive oxygen species (ROS) in cells. The protein also has antimicrobial activity against a variety of bacteria by inducing

Nanjing BYabscience technology Co.,Ltd



bacterial membrane breakage. [provided by RefSeq, Nov 2014],

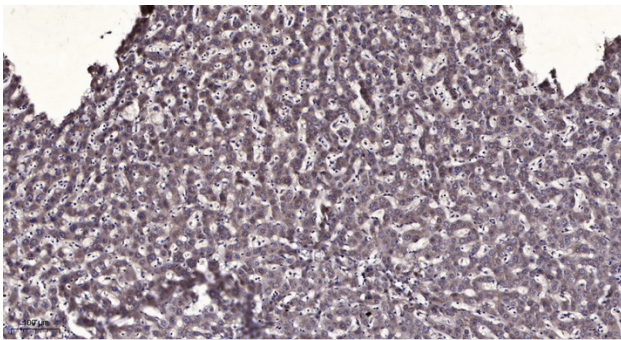
matters needing attention

Avoid repeated freezing and thawing!

Usage suggestions

This product can be used in immunological reaction related experiments. For more information, please consult technical personnel.

Products Images



Immunohistochemical analysis of paraffin-embedded human liver cancer. 1, Antibody was diluted at 1:200(4° overnight). 2, Tris-EDTA,pH9.0 was used for antigen retrieval. 3,Secondary antibody was diluted at 1:200(room temperature, 45min).