



TRI11 rabbit pAb

Catalog No	BYab-12265
Isotype	IgG
Reactivity	Human; Mouse;Rat
Applications	WB
Gene Name	TRIM11 RNF92
Protein Name	TRI11
Immunogen	Synthesized peptide derived from human TRI11 AA range: 128-178
Specificity	This antibody detects endogenous levels of TRI11 at Human/Mouse/Rat
Formulation	Liquid in PBS containing 50% glycerol, 0.5% BSA and 0.02% sodium azide.
Source	Polyclonal, Rabbit,IgG
Purification	The antibody was affinity-purified from rabbit serum by affinity-chromatography using specific immunogen.
Dilution	WB 1: 500-2000
Concentration	1 mg/ml
Purity	≥90%
Storage Stability	-20°C/1 year
Synonyms	
Observed Band	
Cell Pathway	Cytoplasm. Nucleus.
Tissue Specificity	Ubiquitous.
Function	domain:The coiled-coil domain and the B30.2 domain are both necessary for interaction with humanin.,function:May have E3 ubiquitin ligase activity. May contribute to the regulation of the intracellular level of humanin or humanin-containing proteins through the proteasomal degradation pathway.,similarity:Belongs to the TRIM/RBCC family.,similarity:Contains 1 B box-type zinc finger.,similarity:Contains 1 B30.2/SPRY domain.,similarity:Contains 1 RING-type zinc finger.,subunit:Binds cytoplasmic tail of integrin alpha-1. Interacts with the humanin peptide.,tissue specificity:Ubiquitous.,
Background	The protein encoded by this gene is a member of the tripartite motif (TRIM) family. The TRIM motif includes three zinc-binding domains, a RING, a B-box type 1 and

Nanjing BYabscience technology Co.,Ltd



a B-box type 2, and a coiled-coil region. This protein localizes to the nucleus and the cytoplasm. Its function has not been identified. [provided by RefSeq, Jul 2008],

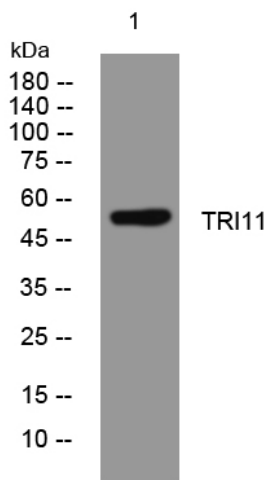
matters needing attention

Avoid repeated freezing and thawing!

Usage suggestions

This product can be used in immunological reaction related experiments. For more information, please consult technical personnel.

Products Images



Western blot analysis of lysates from HpeG2 cells, primary antibody was diluted at 1:1000, 4° over night