



# PNCB rabbit pAb

<b>Catalog No</b>	BYab-12250
<b>Isotype</b>	IgG
<b>Reactivity</b>	Human; Mouse;Rat
<b>Applications</b>	WB;IHC
<b>Gene Name</b>	NAPRT1 FHIP
<b>Protein Name</b>	PNCB
<b>Immunogen</b>	Synthesized peptide derived from human PNCB AA range: 134-184
<b>Specificity</b>	This antibody detects endogenous levels of PNCB at Human/Mouse/Rat
<b>Formulation</b>	Liquid in PBS containing 50% glycerol, 0.5% BSA and 0.02% sodium azide.
<b>Source</b>	Polyclonal, Rabbit,IgG
<b>Purification</b>	The antibody was affinity-purified from rabbit serum by affinity-chromatography using specific immunogen.
<b>Dilution</b>	WB 1:500-2000;IHC-p 1:50-300
<b>Concentration</b>	1 mg/ml
<b>Purity</b>	≥90%
<b>Storage Stability</b>	-20°C/1 year
<b>Synonyms</b>	
<b>Observed Band</b>	
<b>Cell Pathway</b>	Cytoplasm, cytosol .
<b>Tissue Specificity</b>	
<b>Function</b>	catalytic activity:Nicotinate D-ribonucleotide + diphosphate = nicotinate + 5-phospho-alpha-D-ribose 1-diphosphate.,function:Catalyzes the conversion of nicotinic acid (NA) to NA mononucleotide (NaMN). Essential for NA to increase cellular NAD levels and prevent oxidative stress of the cells.,pathway:Cofactor biosynthesis; NAD(+) biosynthesis; nicotinate ribonucleotide from nicotinate: step 1/1.,similarity:Belongs to the NAPRTase family.,
<b>Background</b>	Nicotinic acid (NA; niacin) is converted by nicotinic acid phosphoribosyltransferase (NAPRT; EC 2.4.2.11) to NA mononucleotide (NaMN), which is then converted to NA adenine dinucleotide (NaAD), and finally to nicotinamide adenine dinucleotide (NAD), which serves as a coenzyme in cellular redox reactions and is an essential component of a variety of processes in cellular

Nanjing BYabscience technology Co.,Ltd



metabolism including response to stress (Hara et al., 2007).[supplied by OMIM, Mar 2008],

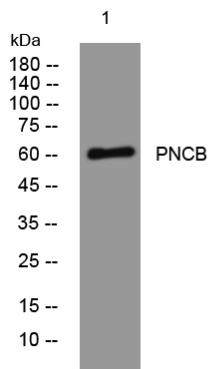
**matters needing attention**

Avoid repeated freezing and thawing!

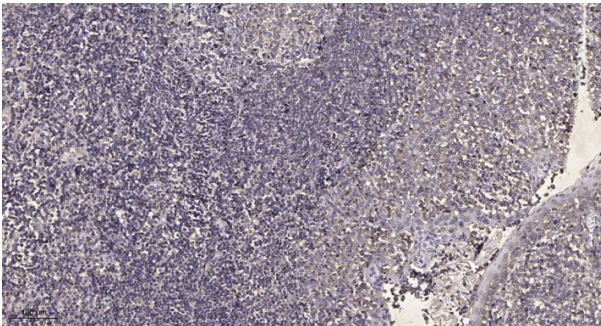
**Usage suggestions**

This product can be used in immunological reaction related experiments. For more information, please consult technical personnel.

## Products Images



Western blot analysis of lysates from HeLa cells, primary antibody was diluted at 1:1000, 4° over night



Immunohistochemical analysis of paraffin-embedded human tonsil. 1, Antibody was diluted at 1:200(4° overnight). 2, Tris-EDTA, pH9.0 was used for antigen retrieval. 3, Secondary antibody was diluted at 1:200(room temperature, 45min).