



CK092 rabbit pAb

Catalog No	BYab-12223
Isotype	IgG
Reactivity	Human;Rat;Mouse;
Applications	WB
Gene Name	C11orf92
Protein Name	CK092
Immunogen	Synthesized peptide derived from human CK092 AA range: 40-90
Specificity	This antibody detects endogenous levels of CK092 at Human
Formulation	Liquid in PBS containing 50% glycerol, 0.5% BSA and 0.02% sodium azide.
Source	Polyclonal, Rabbit,IgG
Purification	The antibody was affinity-purified from rabbit serum by affinity-chromatography using specific immunogen.
Dilution	WB 1: 500-2000
Concentration	1 mg/ml
Purity	≥90%
Storage Stability	-20°C/1 year
Synonyms	
Observed Band	
Cell Pathway	Membrane ; Single-pass membrane protein . Co-localizes with crystalloid granules of eosinophils and granular organelles of mast cells, neutrophils, macrophages and dendritic cells.
Tissue Specificity	Expressed in gastrointestinal and immune tissue, as well as prostate, testis and ovary. Expressed in lamina propria and eosinophils but not in epithelial cells. Expression is greater in benign adjacent tissues than in colon tumors.
Function	
Background	This gene encodes a transmembrane protein that localizes to granular structures, including crystalloid eosinophilic granules and other granular organelles. This gene, along with an overlapping opposite strand gene, has been implicated as a susceptibility locus for colorectal cancer. Alternative splicing of this gene results in multiple transcript variants. [provided by RefSeq, Nov 2014],

Nanjing BYabscience technology Co.,Ltd



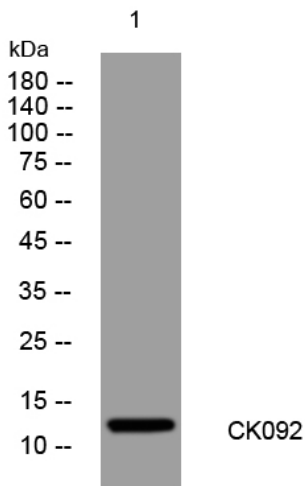
matters needing attention

Avoid repeated freezing and thawing!

Usage suggestions

This product can be used in immunological reaction related experiments. For more information, please consult technical personnel.

Products Images



Western blot analysis of lysates from HeLa cells, primary antibody was diluted at 1:1000, 4° over night