



# WIPF3 rabbit pAb

<b>Catalog No</b>	BYab-12221
<b>Isotype</b>	IgG
<b>Reactivity</b>	Human; Mouse;Rat
<b>Applications</b>	WB
<b>Gene Name</b>	WIPF3 CR16
<b>Protein Name</b>	WIPF3
<b>Immunogen</b>	Synthesized peptide derived from human WIPF3 AA range: 66-116
<b>Specificity</b>	This antibody detects endogenous levels of WIPF3 at Human/Mouse/Rat
<b>Formulation</b>	Liquid in PBS containing 50% glycerol, 0.5% BSA and 0.02% sodium azide.
<b>Source</b>	Polyclonal, Rabbit,IgG
<b>Purification</b>	The antibody was affinity-purified from rabbit serum by affinity-chromatography using specific immunogen.
<b>Dilution</b>	WB 1: 500-2000
<b>Concentration</b>	1 mg/ml
<b>Purity</b>	≥90%
<b>Storage Stability</b>	-20°C/1 year
<b>Synonyms</b>	
<b>Observed Band</b>	
<b>Cell Pathway</b>	Cytoplasm. In hippocampal neurons colocalizes with WASL in the cell body, axons and the growth cone. .
<b>Tissue Specificity</b>	
<b>Function</b>	domain:The KLKR motif is essential for G-actin binding and for actin polymerization.,domain:The profilin-binding motif has been implicated in the interaction with profilin and SH3 domains.,domain:The WH2 domain is found in a number of putative actin-binding proteins.,function:May be a regulator of cytoskeletal organization. May have a role in spermatogenesis.,similarity:Belongs to the verprolin family.,similarity:Contains 1 WH2 domain.,subcellular location:In hippocampal neurons colocalizes with WASL in the cell body, axons and the growth cone.,subunit:Interacts with WASL, and monomeric and filamentous actin.,
<b>Background</b>	

Nanjing BYabscience technology Co.,Ltd



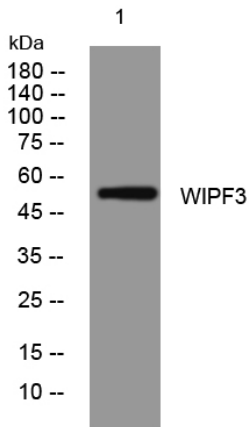
**matters needing attention**

Avoid repeated freezing and thawing!

**Usage suggestions**

This product can be used in immunological reaction related experiments. For more information, please consult technical personnel.

## Products Images



Western blot analysis of lysates from A549 cells, primary antibody was diluted at 1:1000, 4° over night