



Z354A rabbit pAb

Catalog No	BYab-12206
Isotype	IgG
Reactivity	Human; Mouse;Rat
Applications	WB
Gene Name	ZNF354A EZNF HKL1 TCF17
Protein Name	Z354A
Immunogen	Synthesized peptide derived from human Z354A AA range: 272-322
Specificity	This antibody detects endogenous levels of Z354A at Human/Mouse/Rat
Formulation	Liquid in PBS containing 50% glycerol, 0.5% BSA and 0.02% sodium azide.
Source	Polyclonal, Rabbit,IgG
Purification	The antibody was affinity-purified from rabbit serum by affinity-chromatography using specific immunogen.
Dilution	WB 1: 500-2000
Concentration	1 mg/ml
Purity	≥90%
Storage Stability	-20°C/1 year
Synonyms	
Observed Band	
Cell Pathway	Nucleus .
Tissue Specificity	Expressed in kidney and inner ear.
Function	similarity:Belongs to the krueppel C2H2-type zinc-finger protein family.,similarity:Contains 1 KRAB domain.,similarity:Contains 13 C2H2-type zinc fingers.,tissue specificity:Expressed in kidney and inner ear.,
Background	
matters needing attention	Avoid repeated freezing and thawing!

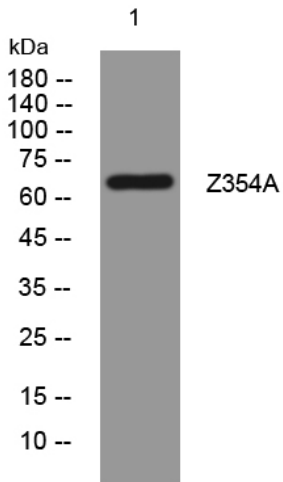
Nanjing BYabscience technology Co.,Ltd



Usage suggestions

This product can be used in immunological reaction related experiments. For more information, please consult technical personnel.

Products Images



Western blot analysis of lysates from A431 cells, primary antibody was diluted at 1:1000, 4° over night