



SLIB rabbit pAb

Catalog No	BYab-12205
Isotype	IgG
Reactivity	Human; Mouse;Rat
Applications	IHC;IF
Gene Name	GHRH GHRF
Protein Name	SLIB
Immunogen	Synthesized peptide derived from human SLIB AA range: 43-93
Specificity	This antibody detects endogenous levels of SLIB at Human/Mouse/Rat
Formulation	Liquid in PBS containing 50% glycerol, 0.5% BSA and 0.02% sodium azide.
Source	Polyclonal, Rabbit,IgG
Purification	The antibody was affinity-purified from rabbit serum by affinity-chromatography using specific immunogen.
Dilution	IHC-p 1: 50-200. IF 1:50-200
Concentration	1 mg/ml
Purity	≥90%
Storage Stability	-20°C/1 year
Synonyms	
Observed Band	
Cell Pathway	Secreted.
Tissue Specificity	
Function	function:GRF is released by the hypothalamus and acts on the adenohypophyse to stimulate the secretion of growth hormone.,online information:Growth hormone releasing hormone entry,pharmaceutical:Available under the names Groliberin (Pharmacia) or Somatrel (Ferring). Also available under the name Geref (Serono). Geref is a synthetic acetylated form of residues 1 to 29 of GHRH. Used for the treatment of growth hormone deficiency.,similarity:Belongs to the glucagon family.,
Background	This gene encodes a member of the glucagon family of proteins. The encoded preproprotein is produced in the hypothalamus and cleaved to generate the mature factor, known as somatoliberin, which acts to stimulate growth hormone release from the pituitary gland. Variant receptors for somatoliberin have been

Nanjing BYabscience technology Co.,Ltd



found in several types of tumors, and antagonists of these receptors can inhibit the growth of the tumors. Defects in this gene are a cause of dwarfism, while hypersecretion of the encoded protein is a cause of gigantism. Alternative splicing results in multiple transcript variants, at least one of which encodes a preproprotein that is proteolytically processed. [provided by RefSeq, Jan 2016],

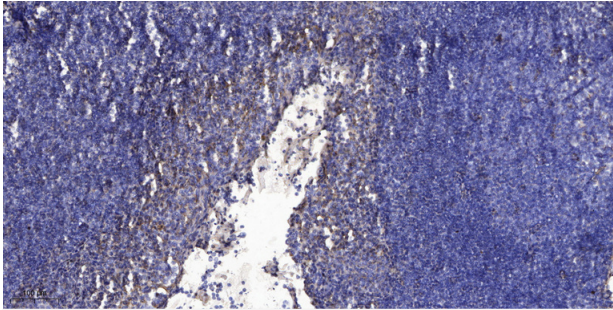
matters needing attention

Avoid repeated freezing and thawing!

Usage suggestions

This product can be used in immunological reaction related experiments. For more information, please consult technical personnel.

Products Images



Immunohistochemical analysis of paraffin-embedded human tonsil. 1, Antibody was diluted at 1:200(4° overnight). 2, Tris-EDTA,pH9.0 was used for antigen retrieval. 3,Secondary antibody was diluted at 1:200(room temperature, 30min).