



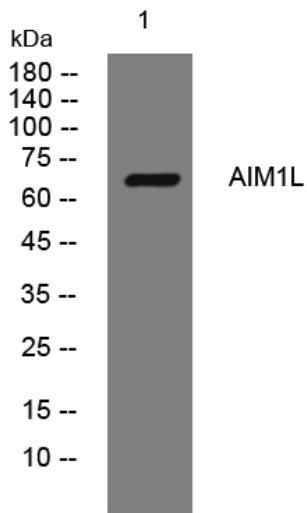
AIM1L rabbit pAb

| | |
|----------------------------------|---|
| Catalog No | BYab-12200 |
| Isotype | IgG |
| Reactivity | Human;Rat;Mouse; |
| Applications | WB |
| Gene Name | AIM1L CRYBG2 |
| Protein Name | AIM1L |
| Immunogen | Synthesized peptide derived from human AIM1L AA range: 212-262 |
| Specificity | This antibody detects endogenous levels of AIM1L at Human |
| Formulation | Liquid in PBS containing 50% glycerol, 0.5% BSA and 0.02% sodium azide. |
| Source | Polyclonal, Rabbit,IgG |
| Purification | The antibody was affinity-purified from rabbit serum by affinity-chromatography using specific immunogen. |
| Dilution | WB 1: 500-2000 |
| Concentration | 1 mg/ml |
| Purity | ≥90% |
| Storage Stability | -20°C/1 year |
| Synonyms | |
| Observed Band | |
| Cell Pathway | |
| Tissue Specificity | |
| Function | similarity:Contains 1 ricin B-type lectin domain.,similarity:Contains 10 beta/gamma crystallin 'Greek key' domains., |
| Background | |
| matters needing attention | Avoid repeated freezing and thawing! |
| Usage suggestions | This product can be used in immunological reaction related experiments. For more information, please consult technical personnel. |

Nanjing BYabscience technology Co.,Ltd



Products Images



Western blot analysis of lysates from PC-12 cells,
primary antibody was diluted at 1:1000, 4° over night