



ZBT20 rabbit pAb

Catalog No	BYab-12199
Isotype	IgG
Reactivity	Human; Mouse
Applications	WB
Gene Name	ZBTB20 DPZF ZNF288
Protein Name	ZBT20
Immunogen	Synthesized peptide derived from human ZBT20 AA range: 633-683
Specificity	This antibody detects endogenous levels of ZBT20 at Human/Mouse
Formulation	Liquid in PBS containing 50% glycerol, 0.5% BSA and 0.02% sodium azide.
Source	Polyclonal, Rabbit,IgG
Purification	The antibody was affinity-purified from rabbit serum by affinity-chromatography using specific immunogen.
Dilution	WB 1: 500-2000
Concentration	1 mg/ml
Purity	≥90%
Storage Stability	-20°C/1 year
Synonyms	
Observed Band	
Cell Pathway	Nucleus .
Tissue Specificity	Expressed in spleen, lymph node, thymus, peripheral blood leukocytes, and fetal liver.
Function	function:May be a transcription factor that may be involved in hematopoiesis, oncogenesis, and immune responses.,similarity:Contains 1 BTB (POZ) domain.,similarity:Contains 5 C2H2-type zinc fingers.,subunit:Can homodimerize. Binds to DNA.,tissue specificity:Expressed in spleen, lymph node, thymus, peripheral blood leukocytes, and fetal liver.,
Background	
matters needing attention	Avoid repeated freezing and thawing!

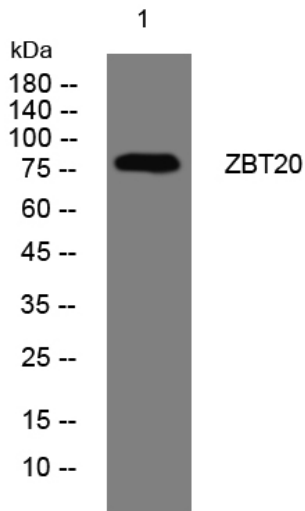
Nanjing BYabscience technology Co.,Ltd



Usage suggestions

This product can be used in immunological reaction related experiments. For more information, please consult technical personnel.

Products Images



Western blot analysis of lysates from DU145 cells, primary antibody was diluted at 1:1000, 4° over night