



LOX15 rabbit pAb

Catalog No	BYab-12198
Isotype	IgG
Reactivity	Human;Rat;Mouse;
Applications	WB;ELISA;IHC
Gene Name	ALOX15 LOG15
Protein Name	LOX15
Immunogen	Synthesized peptide derived from human LOX15 AA range: 156-206
Specificity	This antibody detects endogenous levels of LOX15 at Human
Formulation	Liquid in PBS containing 50% glycerol, 0.5% BSA and 0.02% sodium azide.
Source	Polyclonal, Rabbit,IgG
Purification	The antibody was affinity-purified from rabbit serum by affinity-chromatography using specific immunogen.
Dilution	WB 1:500-2000;IHC-p 1:50-300; ELISA 2000-20000
Concentration	1 mg/ml
Purity	≥90%
Storage Stability	-20°C/1 year
Synonyms	
Observed Band	
Cell Pathway	Cytoplasm, cytosol . Cell membrane ; Peripheral membrane protein . Lipid droplet . Predominantly cytosolic; becomes enriched at membranes upon calcium binding (By similarity). Translocates from the cytosol to the plasma membrane when stimulated by IL13/interleukin-13 and in macrophages binding apoptotic cells (By similarity). .
Tissue Specificity	Detected in monocytes and eosinophils (at protein level). Expressed in airway epithelial cells.
Function	catalytic activity:Arachidonate + O(2) = (5Z,8Z,11Z,13E)-(15S)-15-hydroperoxyicosa-5,8,11,13-tetraenoate.,cofactor:Bind s 1 iron ion per subunit.,function:Converts arachidonic acid to 15S-hydroperoxyeicosatetraenoic acid. Also acts on C-12 of arachidonate as well as on linoleic acid.,pathway:Lipid metabolism; leukotriene D4 biosynthesis.,similarity:Belongs to the lipoxygenase family.,similarity:Contains 1 lipoxygenase domain.,similarity:Contains 1 PLAT domain.,

Nanjing BYabscience technology Co.,Ltd



Background

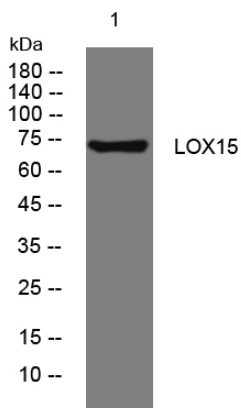
matters needing attention

Avoid repeated freezing and thawing!

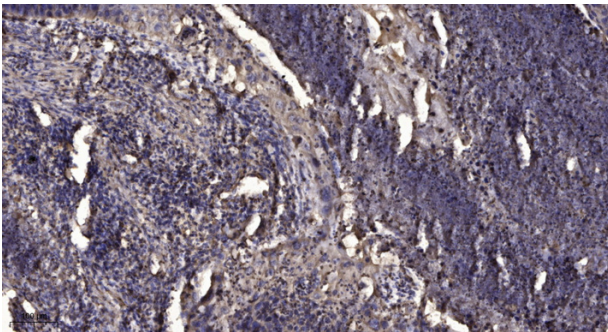
Usage suggestions

This product can be used in immunological reaction related experiments. For more information, please consult technical personnel.

Products Images



Western blot analysis of lysates from THP-1 cells, primary antibody was diluted at 1:1000, 4° over night



Immunohistochemical analysis of paraffin-embedded human Squamous cell carcinoma of lung. 1, Antibody was diluted at 1:200(4° overnight). 2, Tris-EDTA,pH9.0 was used for antigen retrieval. 3,Secondary antibody was diluted at 1:200(room temperature, 45min).