



REXO4 rabbit pAb

Catalog No	BYab-12194
Isotype	IgG
Reactivity	Human; Mouse
Applications	WB;IHC
Gene Name	REXO4 PMC2 XPMC2H
Protein Name	REXO4
Immunogen	Synthesized peptide derived from human REXO4 AA range: 312-362
Specificity	This antibody detects endogenous levels of REXO4 at Human/Mouse
Formulation	Liquid in PBS containing 50% glycerol, 0.5% BSA and 0.02% sodium azide.
Source	Polyclonal, Rabbit,IgG
Purification	The antibody was affinity-purified from rabbit serum by affinity-chromatography using specific immunogen.
Dilution	WB 1:500-2000;IHC-p 1:50-300
Concentration	1 mg/ml
Purity	≥90%
Storage Stability	-20°C/1 year
Synonyms	
Observed Band	
Cell Pathway	Nucleus, nucleolus .
Tissue Specificity	
Function	similarity:Belongs to the REXO4 family.,similarity:Contains 1 exonuclease domain.,subunit:Can bind ESR1 and ESR2. This interaction is abrogated by estrogen and augmented by tamoxifen treatment.,
Background	
matters needing attention	Avoid repeated freezing and thawing!

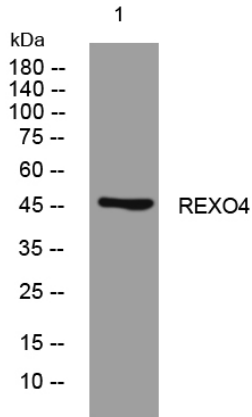
Nanjing BYabscience technology Co.,Ltd



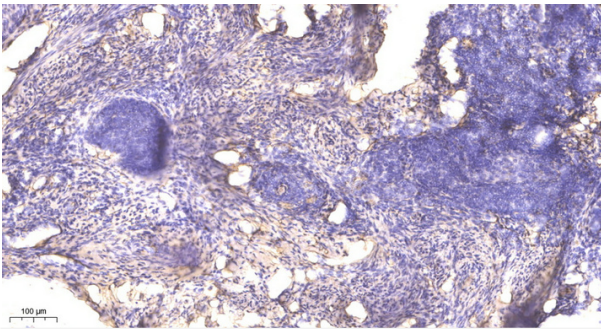
Usage suggestions

This product can be used in immunological reaction related experiments. For more information, please consult technical personnel.

Products Images



Western blot analysis of lysates from SW480 cells, primary antibody was diluted at 1:1000, 4° over night



Immunohistochemical analysis of paraffin-embedded human cervical carcinoma. 1, Antibody was diluted at 1:200(4° overnight). 2, Tris-EDTA,pH9.0 was used for antigen retrieval. 3,Secondary antibody was diluted at 1:200(room temperature, 45min).