



ARMC9 rabbit pAb

Catalog No	BYab-12187
Isotype	IgG
Reactivity	Human; Mouse;Rat
Applications	WB
Gene Name	ARMC9 KIAA1868
Protein Name	ARMC9
Immunogen	Synthesized peptide derived from human ARMC9 AA range: 713-763
Specificity	This antibody detects endogenous levels of ARMC9 at Human/Mouse/Rat
Formulation	Liquid in PBS containing 50% glycerol, 0.5% BSA and 0.02% sodium azide.
Source	Polyclonal, Rabbit,IgG
Purification	The antibody was affinity-purified from rabbit serum by affinity-chromatography using specific immunogen.
Dilution	WB 1: 500-2000
Concentration	1 mg/ml
Purity	≥90%
Storage Stability	-20°C/1 year
Synonyms	
Observed Band	
Cell Pathway	Cytoplasm, cytoskeleton, cilium basal body . Cell projection, cilium . Cytoplasm, cytoskeleton, microtubule organizing center, centrosome, centriole . Localized to the proximal region in cilia. Stimulation of Hh signaling leads to redistribution of ARMC9 toward the ciliary tip within 6 hours, follow by a gradual return to its original proximal location (By similarity). Localizes to the daughter centriole of the primary cilium in RPE1 cells (PubMed:28625504). .
Tissue Specificity	Strongly expressed in most melanomas and melanocytes. Weakly expressed in the testis.
Function	similarity:Contains 1 LisH domain.,tissue specificity:Strongly expressed in most melanomas and melanocytes. Weakly expressed in the testis.,
Background	

Nanjing BYabscience technology Co.,Ltd



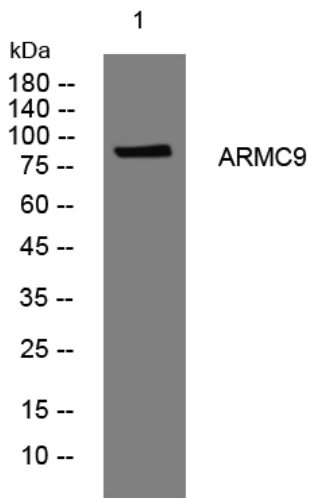
matters needing attention

Avoid repeated freezing and thawing!

Usage suggestions

This product can be used in immunological reaction related experiments. For more information, please consult technical personnel.

Products Images



Western blot analysis of lysates from HeLa cells, primary antibody was diluted at 1:1000, 4° over night