



NCF1C rabbit pAb

Catalog No	BYab-12179
Isotype	IgG
Reactivity	Human;Rat;Mouse;
Applications	WB
Gene Name	NCF1C SH3PXD1C
Protein Name	NCF1C
Immunogen	Synthesized peptide derived from human NCF1C AA range: 100-150
Specificity	This antibody detects endogenous levels of NCF1C at Human
Formulation	Liquid in PBS containing 50% glycerol, 0.5% BSA and 0.02% sodium azide.
Source	Polyclonal, Rabbit,IgG
Purification	The antibody was affinity-purified from rabbit serum by affinity-chromatography using specific immunogen.
Dilution	WB 1: 500-2000
Concentration	1 mg/ml
Purity	≥90%
Storage Stability	-20°C/1 year
Synonyms	
Observed Band	
Cell Pathway	Cytoplasm .
Tissue Specificity	
Function	disease:Defects in NCF1 are the cause of chronic granulomatous disease autosomal recessive cytochrome-b-positive type 1 (CGD1) [MIM:233700]. Chronic granulomatous disease is a genetically heterogeneous disorder characterized by the inability of neutrophils and phagocytes to kill microbes that they have ingested. Patients suffer from life-threatening bacterial/fungal infections.,function:NCF2, NCF1, and a membrane bound cytochrome b558 are required for activation of the latent NADPH oxidase (necessary for superoxide production).,online information:NCF1 deficiency database,similarity:Contains 1 PX (phox homology) domain.,similarity:Contains 2 SH3 domains.,subunit:Interacts with NOXA1.,

Nanjing BYabscience technology Co.,Ltd



Background

The neutrophil cytosolic factor 1 (NCF1) gene encodes the 47 kDa cytosolic subunit of neutrophil NADPH oxidase, which produces superoxide anion. The NCF1 gene is located in close proximity to two highly similar, multi-exon pseudogenes at chromosome 7q11.23, corresponding to this gene record and GeneID:654816. The two pseudogenes contain a dinucleotide deletion (delta-GT) in exon 2 that results in a frameshift and truncation of the open reading frame, and neither pseudogene is likely to express a protein. Recombination events between the pseudogenes and the functional NCF1 gene can inactivate the NCF1 gene and result in chronic granulomatous disease. [provided by RefSeq, Nov 2009],

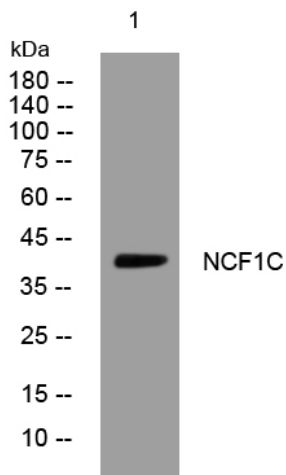
matters needing attention

Avoid repeated freezing and thawing!

Usage suggestions

This product can be used in immunological reaction related experiments. For more information, please consult technical personnel.

Products Images



Western blot analysis of lysates from Jarkat cells, primary antibody was diluted at 1:1000, 4° over night