



UBL7 rabbit pAb

Catalog No	BYab-12163
Isotype	IgG
Reactivity	Human; Mouse
Applications	WB
Gene Name	UBL7 BMSCUBP SB132
Protein Name	UBL7
Immunogen	Synthesized peptide derived from human UBL7 AA range: 180-230
Specificity	This antibody detects endogenous levels of UBL7 at Human/Mouse
Formulation	Liquid in PBS containing 50% glycerol, 0.5% BSA and 0.02% sodium azide.
Source	Polyclonal, Rabbit,IgG
Purification	The antibody was affinity-purified from rabbit serum by affinity-chromatography using specific immunogen.
Dilution	WB 1: 500-2000
Concentration	1 mg/ml
Purity	≥90%
Storage Stability	-20°C/1 year
Synonyms	
Observed Band	
Cell Pathway	
Tissue Specificity	Ubiquitous. Highly expressed in heart, skeletal muscle, testis, thyroid and adrenal gland.
Function	induction:Down-regulated by PMA in bone marrow stroma cells.,similarity:Contains 1 UBA domain.,similarity:Contains 1 ubiquitin-like domain.,subunit:Binds ubiquitin.,tissue specificity:Ubiquitous. Highly expressed in heart, skeletal muscle, testis, thyroid and adrenal gland.,
Background	
matters needing attention	Avoid repeated freezing and thawing!

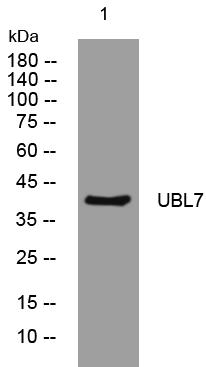
Nanjing BYabscience technology Co.,Ltd



Usage suggestions

This product can be used in immunological reaction related experiments. For more information, please consult technical personnel.

Products Images



Western blot analysis of lysates from HeLa cells, primary antibody was diluted at 1:1000, 4° over night