



FXL18 rabbit pAb

Catalog No	BYab-12162
Isotype	IgG
Reactivity	Human;Rat;Mouse;
Applications	WB
Gene Name	FBXL18 FBL18
Protein Name	FXL18
Immunogen	Synthesized peptide derived from human FXL18 AA range: 7-57
Specificity	This antibody detects endogenous levels of FXL18 at Human
Formulation	Liquid in PBS containing 50% glycerol, 0.5% BSA and 0.02% sodium azide.
Source	Polyclonal, Rabbit,IgG
Purification	The antibody was affinity-purified from rabbit serum by affinity-chromatography using specific immunogen.
Dilution	WB 1: 500-2000
Concentration	1 mg/ml
Purity	≥90%
Storage Stability	-20°C/1 year
Synonyms	
Observed Band	
Cell Pathway	
Tissue Specificity	
Function	function:Substrate-recognition component of the SCF (SKP1-CUL1-F-box protein)-type E3 ubiquitin ligase complex.,similarity:Contains 1 F-box domain.,similarity:Contains 3 LRR (leucine-rich) repeats.,subunit:Directly interacts with SKP1A and CUL1.,
Background	The protein encoded by this gene is a member of a family of proteins that contain an approximately 40-amino acid F-box motif. This motif is important for interaction with SKP1 and for targeting some proteins for degradation. The encoded protein has been shown to control the cellular level of FBXL7, a protein that induces mitotic arrest, by targeting it for polyubiquitylation and proteasomal degradation. Members of the F-box protein family, such as FBXL18, are characterized by an approximately 40-amino acid F-box motif. F-box proteins interact with SKP1

Nanjing BYabscience technology Co.,Ltd



through the F box, and they interact with ubiquitination targets through other protein interaction domains. [provided by RefSeq, Mar 2016],

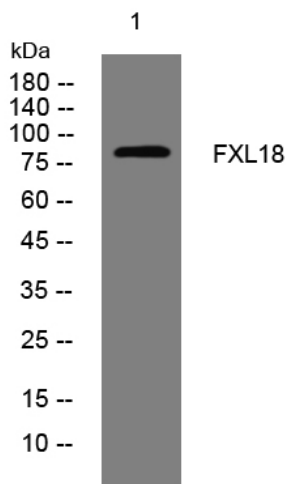
matters needing attention

Avoid repeated freezing and thawing!

Usage suggestions

This product can be used in immunological reaction related experiments. For more information, please consult technical personnel.

Products Images



Western blot analysis of lysates from HpeG2 cells, primary antibody was diluted at 1:1000, 4° over night