



RNPL1 rabbit pAb

Catalog No	BYab-12159
Isotype	IgG
Reactivity	Human;Rat;Mouse;
Applications	WB;ELISA;IHC
Gene Name	RNPEPL1
Protein Name	RNPL1
Immunogen	Synthesized peptide derived from human RNPL1 AA range: 112-162
Specificity	This antibody detects endogenous levels of RNPL1 at Human
Formulation	Liquid in PBS containing 50% glycerol, 0.5% BSA and 0.02% sodium azide.
Source	Polyclonal, Rabbit,IgG
Purification	The antibody was affinity-purified from rabbit serum by affinity-chromatography using specific immunogen.
Dilution	WB 1:500-2000;IHC-p 1:50-300; ELISA 2000-20000
Concentration	1 mg/ml
Purity	≥90%
Storage Stability	-20°C/1 year
Synonyms	
Observed Band	
Cell Pathway	cytoplasm,plasma membrane,
Tissue Specificity	Ubiquitously expressed. Expressed at relatively higher levels in heart and skeletal muscle.
Function	cofactor:Binds 1 zinc ion per subunit.,similarity:Belongs to the peptidase M1 family.,tissue specificity:Ubiquitous. Expressed at relatively higher levels in heart and skeletal muscle.,
Background	
matters needing attention	Avoid repeated freezing and thawing!

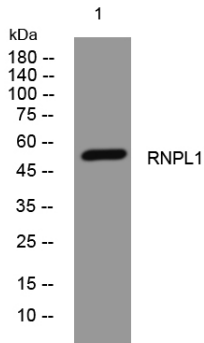
Nanjing BYabscience technology Co.,Ltd



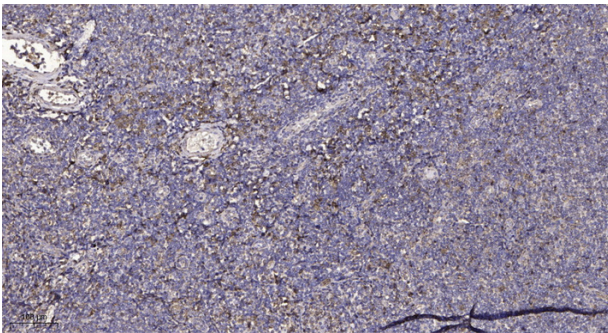
Usage suggestions

This product can be used in immunological reaction related experiments. For more information, please consult technical personnel.

Products Images



Western blot analysis of lysates from AD293 cells, primary antibody was diluted at 1:1000, 4° over night



Immunohistochemical analysis of paraffin-embedded human tonsil. 1, Antibody was diluted at 1:200(4° overnight). 2, Tris-EDTA, pH9.0 was used for antigen retrieval. 3, Secondary antibody was diluted at 1:200(room temperature, 45min).