



# GLYM rabbit pAb

<b>Catalog No</b>	BYab-12157
<b>Isotype</b>	IgG
<b>Reactivity</b>	Human;Rat;Mouse;
<b>Applications</b>	WB
<b>Gene Name</b>	SHMT2
<b>Protein Name</b>	GLYM
<b>Immunogen</b>	Synthesized peptide derived from human GLYM AA range: 122-172
<b>Specificity</b>	This antibody detects endogenous levels of GLYM at Human
<b>Formulation</b>	Liquid in PBS containing 50% glycerol, 0.5% BSA and 0.02% sodium azide.
<b>Source</b>	Polyclonal, Rabbit,IgG
<b>Purification</b>	The antibody was affinity-purified from rabbit serum by affinity-chromatography using specific immunogen.
<b>Dilution</b>	WB 1: 500-2000
<b>Concentration</b>	1 mg/ml
<b>Purity</b>	≥90%
<b>Storage Stability</b>	-20°C/1 year
<b>Synonyms</b>	
<b>Observed Band</b>	
<b>Cell Pathway</b>	Mitochondrion . Mitochondrion matrix, mitochondrion nucleoid . Mitochondrion inner membrane . Cytoplasm . Nucleus . Mainly localizes in the mitochondrion. Also found in the cytoplasm and nucleus as part of the BRISC complex (PubMed:24075985) . .
<b>Tissue Specificity</b>	
<b>Function</b>	catalytic activity:5,10-methylenetetrahydrofolate + glycine + H(2)O = tetrahydrofolate + L-serine.,cofactor:Pyridoxal phosphate.,function:Interconversion of serine and glycine.,miscellaneous:In eukaryotes there are two forms of the enzymes: a cytosolic one and a mitochondrial one.,pathway:One-carbon metabolism; tetrahydrofolate pathway.,similarity:Belongs to the SHMT family.,subunit:Homotetramer.,
<b>Background</b>	This gene encodes the mitochondrial form of a pyridoxal phosphate-dependent enzyme that catalyzes the reversible reaction of serine and tetrahydrofolate to glycine and 5,10-methylene tetrahydrofolate. The encoded product is primarily

**Nanjing BYabscience technology Co.,Ltd**



responsible for glycine synthesis. The activity of the encoded protein has been suggested to be the primary source of intracellular glycine. The gene which encodes the cytosolic form of this enzyme is located on chromosome 17. Alternative splicing results in multiple transcript variants. [provided by RefSeq, Oct 2009],

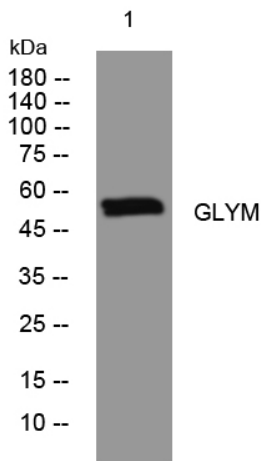
**matters needing attention**

Avoid repeated freezing and thawing!

**Usage suggestions**

This product can be used in immunological reaction related experiments. For more information, please consult technical personnel.

## Products Images



Western blot analysis of lysates from A549 cells, primary antibody was diluted at 1:1000, 4° over night