



SARDH rabbit pAb

Catalog No	BYab-12156
Isotype	IgG
Reactivity	Human; Mouse;Rat
Applications	WB;ELISA;IHC
Gene Name	SARDH DMGDHL1
Protein Name	SARDH
Immunogen	Synthesized peptide derived from human SARDH AA range: 279-329
Specificity	This antibody detects endogenous levels of SARDH at Human/Mouse/Rat
Formulation	Liquid in PBS containing 50% glycerol, 0.5% BSA and 0.02% sodium azide.
Source	Polyclonal, Rabbit,IgG
Purification	The antibody was affinity-purified from rabbit serum by affinity-chromatography using specific immunogen.
Dilution	WB 1:500-2000;IHC-p 1:50-300; ELISA 2000-20000
Concentration	1 mg/ml
Purity	≥90%
Storage Stability	-20°C/1 year
Synonyms	
Observed Band	
Cell Pathway	Mitochondrion matrix .
Tissue Specificity	Expressed in pancreas, liver and kidney.
Function	catalytic activity:Sarcosine + acceptor + H(2)O = glycine + formaldehyde + reduced acceptor.,cofactor:Binds 1 FAD covalently per monomer.,disease:Defects in SARDH are a ause of sarcosinemia [MIM:268900]. Sarcosinemia is a metabolic disorder characterized by an increased concentration of sarcosine in plasma and urine due to sarcosine dehydrogenase deficiency. Prevalence has been estimated at 1:28'000 to 1:350'000 in newborn screening programs. Sarcosinemia is most probably a benign condition without significant clinical problems. It is transmitted in an autosomal recessive manner.,pathway:Amine and polyamine degradation; sarcosine degradation; formaldehyde and glycine from sarcosine: step 1/1.,similarity:Belongs to the gcvT family.,

Nanjing BYabscience technology Co.,Ltd



Background

This gene encodes an enzyme localized to the mitochondrial matrix which catalyzes the oxidative demethylation of sarcosine. This enzyme is distinct from another mitochondrial matrix enzyme, dimethylglycine dehydrogenase, which catalyzes a reaction resulting in the formation of sarcosine. Mutations in this gene are associated with sarcosinemia. Alternatively spliced transcript variants have been described. [provided by RefSeq, Oct 2008],

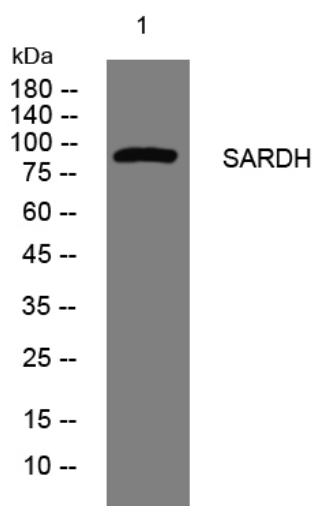
matters needing attention

Avoid repeated freezing and thawing!

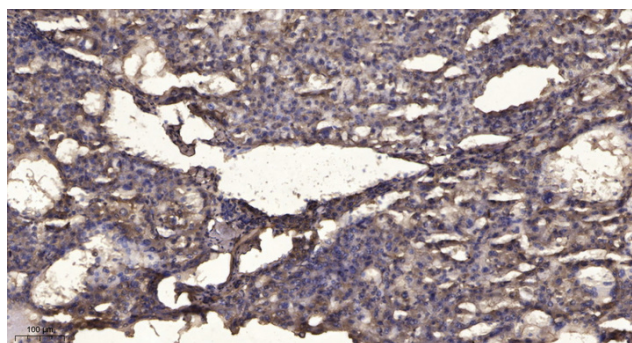
Usage suggestions

This product can be used in immunological reaction related experiments. For more information, please consult technical personnel.

Products Images



Western blot analysis of lysates from 3T3 cells, primary antibody was diluted at 1:1000, 4° over night



Immunohistochemical analysis of paraffin-embedded human liver cancer. 1, Antibody was diluted at 1:200(4° overnight). 2, Tris-EDTA,pH9.0 was used for antigen retrieval. 3,Secondary antibody was diluted at 1:200(room temperature, 45min).