



RMXL1 rabbit pAb

Catalog No	BYab-12154
Isotype	IgG
Reactivity	Human; Mouse;Rat
Applications	WB;ELISA;IHC
Gene Name	RBMXL1
Protein Name	RMXL1
Immunogen	Synthesized peptide derived from human RMXL1 AA range: 304-354
Specificity	This antibody detects endogenous levels of RMXL1 at Human/Mouse/Rat
Formulation	Liquid in PBS containing 50% glycerol, 0.5% BSA and 0.02% sodium azide.
Source	Polyclonal, Rabbit,IgG
Purification	The antibody was affinity-purified from rabbit serum by affinity-chromatography using specific immunogen.
Dilution	WB 1:500-2000;IHC-p 1:50-300; ELISA 2000-20000
Concentration	1 mg/ml
Purity	≥90%
Storage Stability	-20°C/1 year
Synonyms	
Observed Band	
Cell Pathway	Nucleus .
Tissue Specificity	
Function	
Background	This gene represents a retrogene of RNA binding motif protein, X-linked (RBMX), which is located on chromosome X. While all introns in the coding sequence have been processed out compared to the RBMX locus, the ORF is intact and there is specific evidence for transcription at this location. The preservation of the ORF by purifying selection in all Old World monkeys carrying it suggests that this locus is likely to be functional, possibly during male meiosis when X chromosomal genes are silenced or during haploid stages of spermatogenesis. This gene shares 5'' exon structure with the cysteine conjugate-beta lyase 2 locus on chromosome 1, but the coding sequences are non-overlapping. Alternative

Nanjing BYabscience technology Co.,Ltd



splicing results in two transcript variants. [provided by RefSeq, Jun 2009],

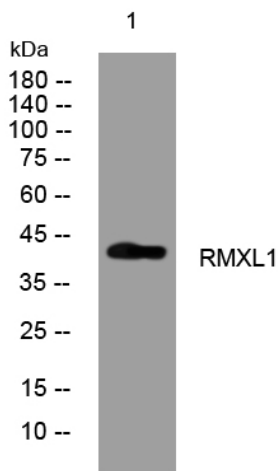
matters needing attention

Avoid repeated freezing and thawing!

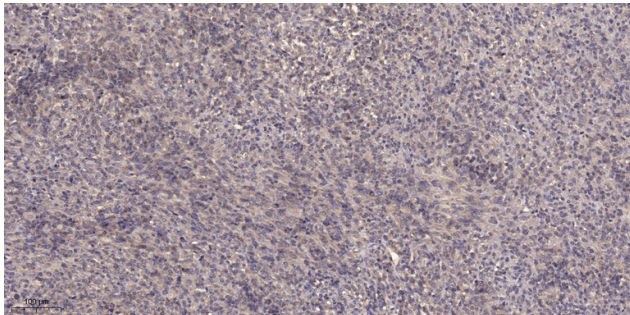
Usage suggestions

This product can be used in immunological reaction related experiments. For more information, please consult technical personnel.

Products Images



Western blot analysis of lysates from HpeG2 cells, primary antibody was diluted at 1:1000, 4° over night



Immunohistochemical analysis of paraffin-embedded human Colon cancer. 1, Antibody was diluted at 1:200(4° overnight). 2, Tris-EDTA,pH9.0 was used for antigen retrieval. 3,Secondary antibody was diluted at 1:200(room temperature, 45min).

Nanjing BYabscience technology Co.,Ltd