



# ARH40 rabbit pAb

<b>Catalog No</b>	BYab-12127
<b>Isotype</b>	IgG
<b>Reactivity</b>	Human; Mouse
<b>Applications</b>	WB
<b>Gene Name</b>	ARHGEF40 SOLO
<b>Protein Name</b>	ARH40
<b>Immunogen</b>	Synthesized peptide derived from human ARH40 AA range: 1261-1311
<b>Specificity</b>	This antibody detects endogenous levels of ARH40 at Human/Mouse
<b>Formulation</b>	Liquid in PBS containing 50% glycerol, 0.5% BSA and 0.02% sodium azide.
<b>Source</b>	Polyclonal, Rabbit,IgG
<b>Purification</b>	The antibody was affinity-purified from rabbit serum by affinity-chromatography using specific immunogen.
<b>Dilution</b>	WB 1: 500-2000
<b>Concentration</b>	1 mg/ml
<b>Purity</b>	≥90%
<b>Storage Stability</b>	-20°C/1 year
<b>Synonyms</b>	
<b>Observed Band</b>	
<b>Cell Pathway</b>	Cytoplasm . Concentrated in the perinuclear region.
<b>Tissue Specificity</b>	Expressed at higher level in the central nervous system and skeletal muscle and greater abundance in fetal than adult brain (at protein level).
<b>Function</b>	function:May act as a guanine nucleotide exchange factor (GEF).,similarity:Contains 1 DH (DBL-homology) domain.,similarity:Contains 1 PH domain.,subcellular location:Concentrated in the perinuclear region.,tissue specificity:Expressed at higher level in the central nervous system and skeletal muscle and greater abundance in fetal than adult brain (at protein level).,
<b>Background</b>	This gene encodes a protein similar to guanosine nucleotide exchange factors for Rho GTPases. The encoded protein contains in its C-terminus a GEF domain involved in exchange activity and a pleckstrin homology domain. Alternatively spliced transcripts that encode different proteins have been described. [provided by RefSeq, Mar 2014],

Nanjing BYabscience technology Co.,Ltd



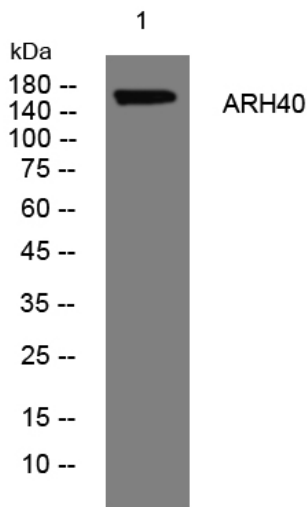
**matters needing attention**

Avoid repeated freezing and thawing!

**Usage suggestions**

This product can be used in immunological reaction related experiments. For more information, please consult technical personnel.

## Products Images



Western blot analysis of lysates from HpeG2 cells, primary antibody was diluted at 1:1000, 4° over night