



# LR16A rabbit pAb

<b>Catalog No</b>	BYab-12126
<b>Isotype</b>	IgG
<b>Reactivity</b>	Human; Mouse
<b>Applications</b>	WB;IHC
<b>Gene Name</b>	LRRC16A CARMIL LRRC16
<b>Protein Name</b>	LR16A
<b>Immunogen</b>	Synthesized peptide derived from human LR16A AA range: 853-903
<b>Specificity</b>	This antibody detects endogenous levels of LR16A at Human/Mouse
<b>Formulation</b>	Liquid in PBS containing 50% glycerol, 0.5% BSA and 0.02% sodium azide.
<b>Source</b>	Polyclonal, Rabbit,IgG
<b>Purification</b>	The antibody was affinity-purified from rabbit serum by affinity-chromatography using specific immunogen.
<b>Dilution</b>	WB 1:500-2000;IHC-p 1:50-300
<b>Concentration</b>	1 mg/ml
<b>Purity</b>	≥90%
<b>Storage Stability</b>	-20°C/1 year
<b>Synonyms</b>	
<b>Observed Band</b>	
<b>Cell Pathway</b>	Cytoplasm . Cytoplasm, cytoskeleton . Cell membrane . Cell projection, lamellipodium . Found on macropinosomes (PubMed:19846667). Colocalized with heterodimeric capping protein (CP) and F-actin in lamellipodia but not with F-actin in stress fibers (PubMed:19846667). .
<b>Tissue Specificity</b>	Expressed in lung, placenta, small intestine, liver, thymus, colon, skeletal muscle, heart and brain. Higher expression in kidney.
<b>Function</b>	function: Binds CAPZA2 with high affinity and significantly decreases CAPZA2 affinity for actin barbed ends. Increases the rate of elongation from seeds in the presence of CAPZA2, however, seems unable to nucleate filaments. Rapidly uncaps barbed ends capped by CAPZA2 and enhances barbed-end actin polymerization.,similarity: Belongs to the CARMIL family.,similarity: Contains 11 LRR (leucine-rich) repeats.,subcellular location: Colocalized with F-actin in lamellipodia but not with F-actin in stress fibers.,subunit: Interacts via its C-terminus with CAPZA2 in cytoplasm; interaction is essential for lamellipodial protrusion and cell translocation.,tissue specificity: Expressed in lung, placenta,

Nanjing BYabscience technology Co.,Ltd



small intestine, liver, thymus, colon, skeletal muscle, heart and brain. Higher expression in kidney.,

## Background

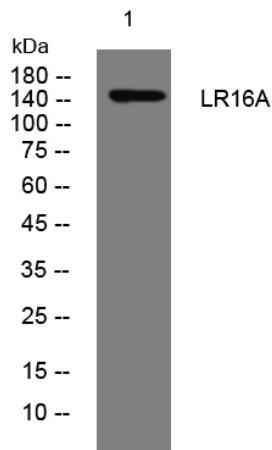
### matters needing attention

Avoid repeated freezing and thawing!

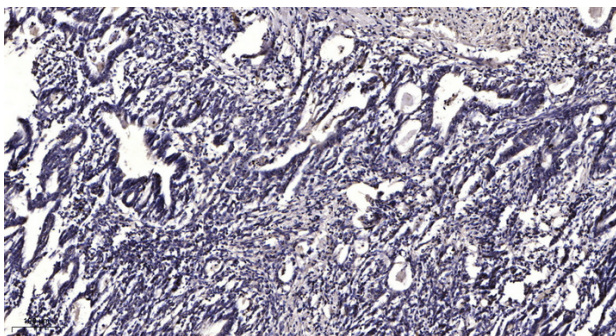
### Usage suggestions

This product can be used in immunological reaction related experiments. For more information, please consult technical personnel.

## Products Images



Western blot analysis of lysates from U2OS cells, primary antibody was diluted at 1:1000, 4° over night



Immunohistochemical analysis of paraffin-embedded human Gastric adenocarcinoma. 1, Antibody was diluted at 1:200(4° overnight). 2, Tris-EDTA, pH9.0 was used for antigen retrieval. 3, Secondary antibody was diluted at 1:200(room temperature, 45min).