



FBX18 rabbit pAb

Catalog No	BYab-12113
Isotype	IgG
Reactivity	Human; Mouse
Applications	WB
Gene Name	FBXO18 FBH1 FBX18
Protein Name	FBX18
Immunogen	Synthesized peptide derived from human FBX18 AA range: 799-849
Specificity	This antibody detects endogenous levels of FBX18 at Human/Mouse
Formulation	Liquid in PBS containing 50% glycerol, 0.5% BSA and 0.02% sodium azide.
Source	Polyclonal, Rabbit,IgG
Purification	The antibody was affinity-purified from rabbit serum by affinity-chromatography using specific immunogen.
Dilution	WB 1: 500-2000
Concentration	1 mg/ml
Purity	≥90%
Storage Stability	-20°C/1 year
Synonyms	
Observed Band	
Cell Pathway	Nucleus . Chromosome . Accumulates at sites of DNA damage or replication stress (PubMed:19736316, PubMed:23677613). PCNA is required for localization to DNA damage sites (PubMed:23677613). Localizes to the nucleoplasm in absence of DNA damage (PubMed:23677613). .
Tissue Specificity	
Function	function:DNA-dependent ATPase. Unwinds double-stranded DNA in a 3' to 5' direction.,function:Probably recognizes and binds to some phosphorylated proteins and promotes their ubiquitination and degradation.,similarity:Belongs to the helicase family. UvrD subfamily.,similarity:Contains 1 F-box domain.,subunit:Part of a SCF E3 ubiquitin ligase complex consisting of SKP1, CUL1, RBX1 and FBXO18. Interacts with SKP1.,
Background	This gene encodes a member of the F-box protein family, members of which are characterized by an approximately 40 amino acid motif, the F-box. The F-box proteins constitute one of the four subunits of ubiquitin protein ligase complex

Nanjing BYabscience technology Co.,Ltd



called SCFs (SKP1-cullin-F-box), which function in phosphorylation-dependent ubiquitination. The F-box proteins are divided into three classes: Fbws containing WD-40 domains, Fbls containing leucine-rich repeats, and Fbxs containing either different protein-protein interaction modules or no recognizable motifs. The protein encoded by this gene belongs to the Fbx class. It contains an F-box motif and seven conserved helicase motifs, and has both DNA-dependent ATPase and DNA unwinding activities. Alternatively spliced transcript variants encoding distinct isoforms have been identified for this gene. [provided by RefSeq, Jul 2008],

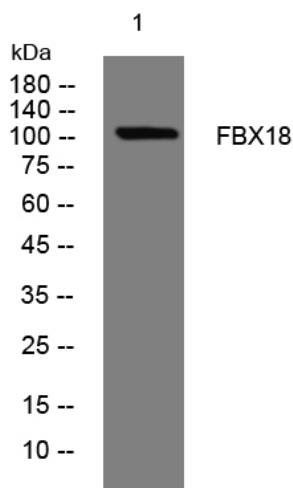
matters needing attention

Avoid repeated freezing and thawing!

Usage suggestions

This product can be used in immunological reaction related experiments. For more information, please consult technical personnel.

Products Images



Western blot analysis of lysates from HuvEc cells, primary antibody was diluted at 1:1000, 4° over night