



N4BP2 rabbit pAb

| | |
|---------------------------|--|
| Catalog No | BYab-12100 |
| Isotype | IgG |
| Reactivity | Human;Rat;Mouse; |
| Applications | WB;ELISA;IHC |
| Gene Name | N4BP2 B3BP KIAA1413 |
| Protein Name | N4BP2 |
| Immunogen | Synthesized peptide derived from human N4BP2 AA range: 256-306 |
| Specificity | This antibody detects endogenous levels of N4BP2 at Human |
| Formulation | Liquid in PBS containing 50% glycerol, 0.5% BSA and 0.02% sodium azide. |
| Source | Polyclonal, Rabbit,IgG |
| Purification | The antibody was affinity-purified from rabbit serum by affinity-chromatography using specific immunogen. |
| Dilution | WB 1:500-2000;IHC-p 1:50-300; ELISA 2000-20000 |
| Concentration | 1 mg/ml |
| Purity | ≥90% |
| Storage Stability | -20°C/1 year |
| Synonyms | |
| Observed Band | |
| Cell Pathway | Cytoplasm . |
| Tissue Specificity | |
| Function | domain:The Smr domain has nicking endonuclease activity, but no significant double strand cleavage or exonuclease activity.,function:Has 5'-polynucleotide kinase and nicking endonuclease activity. May play a role in DNA repair or recombination.,PTM:Ubiquitinated; this targets the protein for degradation by the proteasome.,similarity:Contains 1 CUE domain.,similarity:Contains 1 Smr domain.,subunit:Binds NEDD4 (By similarity). Binds BCL3 and CREBBP., |
| Background | This gene encodes a protein containing a polynucleotide kinase domain (PNK) near the N-terminal region, and a Small MutS Related (Smr) domain near the C-terminal region. The encoded protein can bind to both B-cell leukemia/lymphoma 3 (BCL-3) and neural precursor cell expressed, developmentally downregulated 4, (Nedd4) proteins. This protein binds and |

Nanjing BYabscience technology Co.,Ltd



hydrolyzes ATP, may function as a 5'-polynucleotide kinase, and has the capacity to be a ubiquitylation substrate. This protein may play a role in transcription-coupled DNA repair or genetic recombination. Alternative splicing results in multiple transcript variants encoding different isoforms. [provided by RefSeq, Jan 2016],

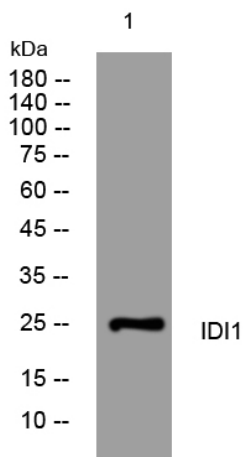
matters needing attention

Avoid repeated freezing and thawing!

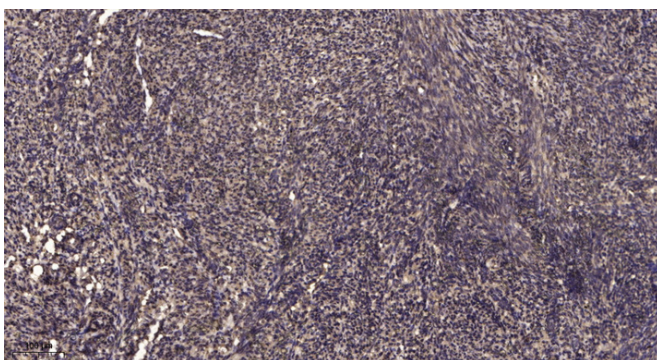
Usage suggestions

This product can be used in immunological reaction related experiments. For more information, please consult technical personnel.

Products Images



Western blot analysis of lysates from HeLa cells, primary antibody was diluted at 1:1000, 4° over night



Immunohistochemical analysis of paraffin-embedded human uterus. 1, Antibody was diluted at 1:200(4° overnight). 2, Tris-EDTA, pH9.0 was used for antigen retrieval. 3, Secondary antibody was diluted at 1:200(room temperature, 45min).

Nanjing BYabscience technology Co.,Ltd