



# ATAD5 rabbit pAb

<b>Catalog No</b>	BYab-12109
<b>Isotype</b>	IgG
<b>Reactivity</b>	Human; Mouse
<b>Applications</b>	WB
<b>Gene Name</b>	ATAD5 C17orf41 FRAG1
<b>Protein Name</b>	ATAD5
<b>Immunogen</b>	Synthesized peptide derived from human ATAD5 AA range: 1054-1104
<b>Specificity</b>	This antibody detects endogenous levels of ATAD5 at Human/Mouse
<b>Formulation</b>	Liquid in PBS containing 50% glycerol, 0.5% BSA and 0.02% sodium azide.
<b>Source</b>	Polyclonal, Rabbit,IgG
<b>Purification</b>	The antibody was affinity-purified from rabbit serum by affinity-chromatography using specific immunogen.
<b>Dilution</b>	WB 1: 500-2000
<b>Concentration</b>	1 mg/ml
<b>Purity</b>	≥90%
<b>Storage Stability</b>	-20°C/1 year
<b>Synonyms</b>	
<b>Observed Band</b>	
<b>Cell Pathway</b>	Nucleus .
<b>Tissue Specificity</b>	
<b>Function</b>	function:Involved in DNA damage response. Involved in a RAD9A-related damage checkpoint, a pathway that is important in determining whether DNA damage is compatible with cell survival or whether it requires cell elimination by apoptosis. Modulates the RAD9A interaction with BCL2 and thereby induces DNA damages-induced apoptosis.,PTM:Phosphorylated upon DNA damage, probably by ATM or ATR. ATR may stimulate the RAD9A dissociation.,sequence caution:Contaminating sequence. Potential poly-A sequence.,similarity:Belongs to the AAA ATPase family.,subunit:Interacts with RB1 predominantly in G1 phase via its LXCXE motif. Interacts with RAD9A in growing cells. The interaction with RAD9A is reduced after exposure to DNA replication-inhibiting agents.,

Nanjing BYabscience technology Co.,Ltd



## Background

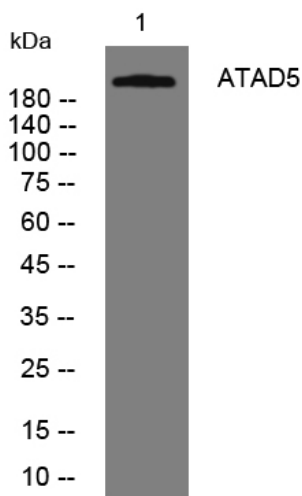
### matters needing attention

Avoid repeated freezing and thawing!

### Usage suggestions

This product can be used in immunological reaction related experiments. For more information, please consult technical personnel.

## Products Images



Western blot analysis of lysates from HeLa cells, primary antibody was diluted at 1:1000, 4° over night