



SPP2A rabbit pAb

Catalog No	BYab-12102
Isotype	IgG
Reactivity	Human; Mouse
Applications	WB;IHC
Gene Name	SPPL2A IMP3 PSL2 PSEC0147
Protein Name	SPP2A
Immunogen	Synthesized peptide derived from human SPP2A AA range: 66-116
Specificity	This antibody detects endogenous levels of SPP2A at Human/Mouse
Formulation	Liquid in PBS containing 50% glycerol, 0.5% BSA and 0.02% sodium azide.
Source	Polyclonal, Rabbit,IgG
Purification	The antibody was affinity-purified from rabbit serum by affinity-chromatography using specific immunogen.
Dilution	WB 1:500-2000;IHC-p 1:50-300
Concentration	1 mg/ml
Purity	≥90%
Storage Stability	-20°C/1 year
Synonyms	
Observed Band	
Cell Pathway	Late endosome membrane ; Multi-pass membrane protein . Lysosome membrane ; Multi-pass membrane protein . Membrane ; Multi-pass membrane protein ; Luminal side . Colocalizes with palmitoylated and myristoylated proteins at the plasma membrane.
Tissue Specificity	Ubiquitous.
Function	function:Functions as an intramembrane protease. Functions in ITM2B processing.,similarity:Belongs to the peptidase A22B family.,similarity:Contains 1 PA (protease associated) domain.,subunit:Interacts with ITM2B.,
Background	This gene encodes a member of the GXGD family of aspartic proteases, which are transmembrane proteins with two conserved catalytic motifs localized within the membrane-spanning regions, as well as a member of the signal peptide peptidase-like protease (SPPL) family. This protein is expressed in all major adult human tissues and localizes to late endosomal compartments and lysosomal membranes. A pseudogene of this gene also lies on chromosome 15. [provided

Nanjing BYabscience technology Co.,Ltd



by RefSeq, Feb 2012],

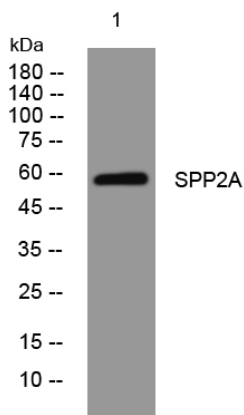
matters needing attention

Avoid repeated freezing and thawing!

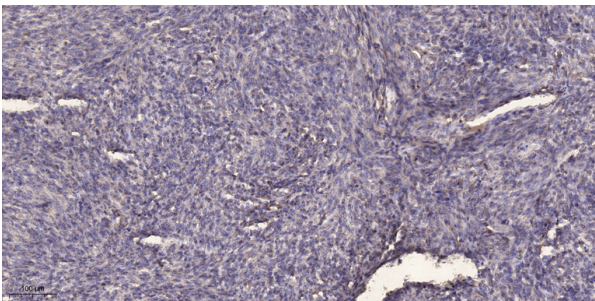
Usage suggestions

This product can be used in immunological reaction related experiments. For more information, please consult technical personnel.

Products Images



Western blot analysis of lysates from HCT116 cells, primary antibody was diluted at 1:1000, 4° over night



Immunohistochemical analysis of paraffin-embedded human Colon cancer. 1, Antibody was diluted at 1:200(4° overnight). 2, Tris-EDTA,pH9.0 was used for antigen retrieval. 3,Secondary antibody was diluted at 1:200(room temperature, 45min).

Nanjing BYabscience technology Co.,Ltd