



# N4BP2 rabbit pAb

<b>Catalog No</b>	BYab-12100
<b>Isotype</b>	IgG
<b>Reactivity</b>	Human;Rat;Mouse;
<b>Applications</b>	WB;ELISA;IHC
<b>Gene Name</b>	N4BP2 B3BP KIAA1413
<b>Protein Name</b>	N4BP2
<b>Immunogen</b>	Synthesized peptide derived from human N4BP2 AA range: 256-306
<b>Specificity</b>	This antibody detects endogenous levels of N4BP2 at Human
<b>Formulation</b>	Liquid in PBS containing 50% glycerol, 0.5% BSA and 0.02% sodium azide.
<b>Source</b>	Polyclonal, Rabbit,IgG
<b>Purification</b>	The antibody was affinity-purified from rabbit serum by affinity-chromatography using specific immunogen.
<b>Dilution</b>	WB 1:500-2000;IHC-p 1:50-300; ELISA 2000-20000
<b>Concentration</b>	1 mg/ml
<b>Purity</b>	≥90%
<b>Storage Stability</b>	-20°C/1 year
<b>Synonyms</b>	
<b>Observed Band</b>	
<b>Cell Pathway</b>	Cytoplasm .
<b>Tissue Specificity</b>	
<b>Function</b>	domain:The Smr domain has nicking endonuclease activity, but no significant double strand cleavage or exonuclease activity.,function:Has 5'-polynucleotide kinase and nicking endonuclease activity. May play a role in DNA repair or recombination.,PTM:Ubiquitinated; this targets the protein for degradation by the proteasome.,similarity:Contains 1 CUE domain.,similarity:Contains 1 Smr domain.,subunit:Binds NEDD4 (By similarity). Binds BCL3 and CREBBP.,
<b>Background</b>	This gene encodes a protein containing a polynucleotide kinase domain (PNK) near the N-terminal region, and a Small MutS Related (Smr) domain near the C-terminal region. The encoded protein can bind to both B-cell leukemia/lymphoma 3 (BCL-3) and neural precursor cell expressed, developmentally downregulated 4, (Nedd4) proteins. This protein binds and

Nanjing BYabscience technology Co.,Ltd



hydrolyzes ATP, may function as a 5'-polynucleotide kinase, and has the capacity to be a ubiquitylation substrate. This protein may play a role in transcription-coupled DNA repair or genetic recombination. Alternative splicing results in multiple transcript variants encoding different isoforms. [provided by RefSeq, Jan 2016],

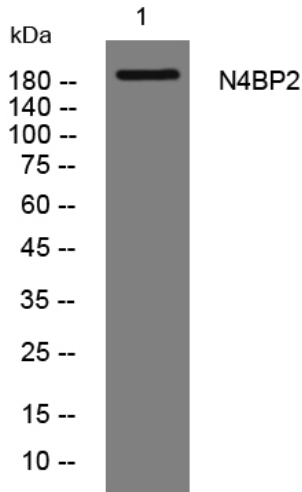
**matters needing attention**

Avoid repeated freezing and thawing!

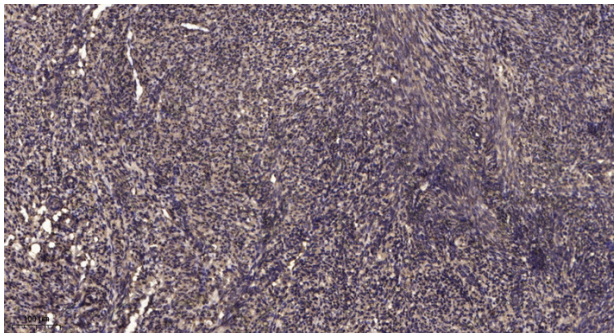
**Usage suggestions**

This product can be used in immunological reaction related experiments. For more information, please consult technical personnel.

**Products Images**



Western blot analysis of lysates from HeLa cells, primary antibody was diluted at 1:1000, 4° over night



Immunohistochemical analysis of paraffin-embedded human uterus. 1, Antibody was diluted at 1:200(4° overnight). 2, Tris-EDTA,pH9.0 was used for antigen retrieval. 3,Secondary antibody was diluted at 1:200(room temperature, 45min).