



P4HA1 rabbit pAb

Catalog No	BYab-12098
Isotype	IgG
Reactivity	Human; Mouse;Rat
Applications	WB
Gene Name	P4HA1 P4HA
Protein Name	P4HA1
Immunogen	Synthesized peptide derived from human P4HA1 AA range: 461-511
Specificity	This antibody detects endogenous levels of P4HA1 at Human/Mouse/Rat
Formulation	Liquid in PBS containing 50% glycerol, 0.5% BSA and 0.02% sodium azide.
Source	Polyclonal, Rabbit,IgG
Purification	The antibody was affinity-purified from rabbit serum by affinity-chromatography using specific immunogen.
Dilution	WB 1: 500-2000
Concentration	1 mg/ml
Purity	≥90%
Storage Stability	-20°C/1 year
Synonyms	
Observed Band	
Cell Pathway	Endoplasmic reticulum lumen.
Tissue Specificity	Expressed in the heart, liver, skeletal muscle, kidney, placenta, lung and pancreas.
Function	catalytic activity:Procollagen L-proline + 2-oxoglutarate + O(2) = procollagen trans-4-hydroxy-L-proline + succinate + CO(2).,cofactor:Ascorbate.,cofactor:Binds 1 Fe(2+) ion per subunit.,function:Catalyzes the post-translational formation of 4-hydroxyproline in -Xaa-Pro-Gly- sequences in collagens and other proteins.,similarity:Belongs to the P4HA family.,similarity:Contains 1 PKHD (prolyl/lysyl hydroxylase) domain.,similarity:Contains 1 TPR repeat.,subunit:Heterotetramer of two alpha-1 chains and two beta chains (the beta chain is the multi-functional PDI).,
Background	This gene encodes a component of prolyl 4-hydroxylase, a key enzyme in collagen synthesis composed of two identical alpha subunits and two beta subunits. The encoded protein is one of several different types of alpha subunits

Nanjing BYabscience technology Co.,Ltd



and provides the major part of the catalytic site of the active enzyme. In collagen and related proteins, prolyl 4-hydroxylase catalyzes the formation of 4-hydroxyproline that is essential to the proper three-dimensional folding of newly synthesized procollagen chains. Alternatively spliced transcript variants encoding different isoforms have been described. [provided by RefSeq, Jul 2008],

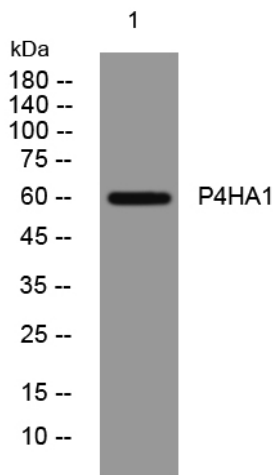
matters needing attention

Avoid repeated freezing and thawing!

Usage suggestions

This product can be used in immunological reaction related experiments. For more information, please consult technical personnel.

Products Images



Western blot analysis of lysates from VEC cells, primary antibody was diluted at 1:1000, 4° over night