



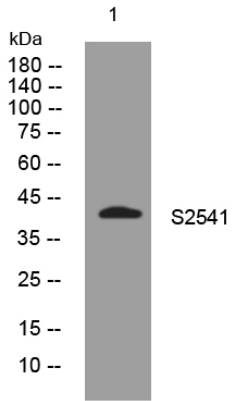
S2541 rabbit pAb

Catalog No	BYab-12080
Isotype	IgG
Reactivity	Human; Mouse
Applications	WB
Gene Name	SLC25A41
Protein Name	S2541
Immunogen	Synthesized peptide derived from human S2541 AA range: 301-351
Specificity	This antibody detects endogenous levels of S2541 at Human/Mouse
Formulation	Liquid in PBS containing 50% glycerol, 0.5% BSA and 0.02% sodium azide.
Source	Polyclonal, Rabbit,IgG
Purification	The antibody was affinity-purified from rabbit serum by affinity-chromatography using specific immunogen.
Dilution	WB 1: 500-2000
Concentration	1 mg/ml
Purity	≥90%
Storage Stability	-20°C/1 year
Synonyms	
Observed Band	
Cell Pathway	Mitochondrion inner membrane ; Multi-pass membrane protein .
Tissue Specificity	
Function	sequence caution:Wrong choice of CDS.,similarity:Belongs to the mitochondrial carrier family.,similarity:Contains 3 Solcar repeats.,
Background	SLC25A41 belongs to the SLC25 family of mitochondrial carrier proteins (Haitina et al., 2006 [PubMed 16949250]).[supplied by OMIM, Mar 2008],
matters needing attention	Avoid repeated freezing and thawing!
Usage suggestions	This product can be used in immunological reaction related experiments. For more information, please consult technical personnel.

Nanjing BYabscience technology Co.,Ltd



Products Images



Western blot analysis of lysates from HeLa cells,
primary antibody was diluted at 1:1000, 4° over night