



MSMO1 rabbit pAb

Catalog No	BYab-12077
Isotype	IgG
Reactivity	Human; Mouse;Rat
Applications	WB;IHC
Gene Name	MSMO1 DESP4 ERG25 SC4MOL
Protein Name	MSMO1
Immunogen	Synthesized peptide derived from human MSMO1 AA range: 212-262
Specificity	This antibody detects endogenous levels of MSMO1 at Human/Mouse/Rat
Formulation	Liquid in PBS containing 50% glycerol, 0.5% BSA and 0.02% sodium azide.
Source	Polyclonal, Rabbit,IgG
Purification	The antibody was affinity-purified from rabbit serum by affinity-chromatography using specific immunogen.
Dilution	WB 1:500-2000;IHC-p 1:50-300
Concentration	1 mg/ml
Purity	≥90%
Storage Stability	-20°C/1 year
Synonyms	
Observed Band	
Cell Pathway	Endoplasmic reticulum membrane ; Multi-pass membrane protein .
Tissue Specificity	
Function	<p>catalytic activity:3-beta-hydroxy-4-beta-methyl-5-alpha-cholest-7-ene-4-alpha-carbaldehyde + NAD(P)H + O(2) = 3-beta-hydroxy-4-beta-methyl-5-alpha-cholest-7-ene-4-alpha-carboxylate + NAD(P)(+) + H(2)O.,catalytic activity:4,4-dimethyl-5-alpha-cholest-7-en-3-beta-ol + NAD(P)H + O(2) = 4-beta-hydroxymethyl-4-alpha-methyl-5-alpha-cholest-7-en-3-beta-ol + NAD(P)(+) + H(2)O.,catalytic activity:4-beta-hydroxymethyl-4-alpha-methyl-5-alpha-cholest-7-en-3-beta-ol + NAD(P)H + O(2) = 3-beta-hydroxy-4-beta-methyl-5-alpha-cholest-7-ene-4-alpha-carbaldehyde + NAD(P)(+) + 2 H(2)O.,cofactor:Iron.,domain:The histidine box domains may</p>

Nanjing BYabscience technology Co.,Ltd



contain the active site and/or be involved in metal ion binding.,pathway: Steroid biosynthesis; zymosterol biosynthesis; zymosterol from lanosterol: step 3/6.,similarity: Belongs to the sterol desaturase family.,

Background

Sterol-C4-methyl oxidase-like protein was isolated based on its similarity to the yeast ERG25 protein. It contains a set of putative metal binding motifs with similarity to that seen in a family of membrane desaturases-hydroxylases. The protein is localized to the endoplasmic reticulum membrane and is believed to function in cholesterol biosynthesis. Alternatively spliced transcript variants encoding distinct isoforms have been found for this gene. [provided by RefSeq, Jul 2008],

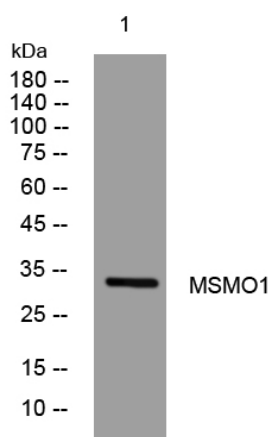
matters needing attention

Avoid repeated freezing and thawing!

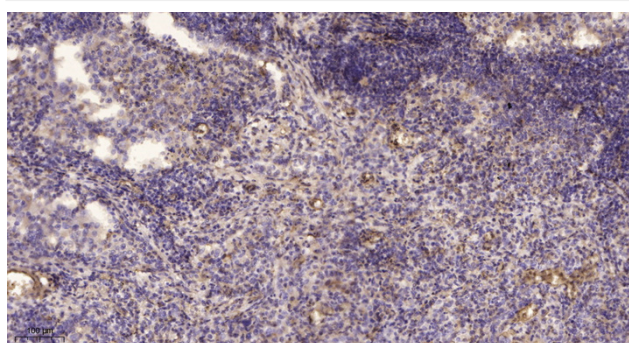
Usage suggestions

This product can be used in immunological reaction related experiments. For more information, please consult technical personnel.

Products Images



Western blot analysis of lysates from KB cells, primary antibody was diluted at 1:1000, 4° over night



Immunohistochemical analysis of paraffin-embedded human lung cancer. 1, Antibody was diluted at 1:200(4° overnight). 2, Tris-EDTA, pH9.0 was used for antigen retrieval. 3, Secondary antibody was diluted at 1:200(room temperature, 45min).