



U17L2 rabbit pAb

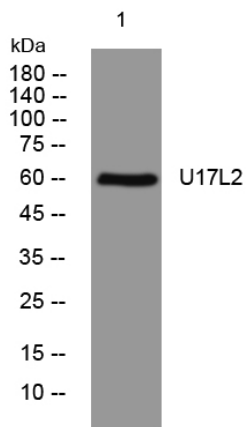
Catalog No	BYab-12073
Isotype	IgG
Reactivity	Human; Mouse
Applications	WB
Gene Name	USP17L2 DUB3
Protein Name	U17L2
Immunogen	Synthesized peptide derived from human U17L2 AA range: 321-371
Specificity	This antibody detects endogenous levels of U17L2 at Human/Mouse
Formulation	Liquid in PBS containing 50% glycerol, 0.5% BSA and 0.02% sodium azide.
Source	Polyclonal, Rabbit,IgG
Purification	The antibody was affinity-purified from rabbit serum by affinity-chromatography using specific immunogen.
Dilution	WB 1: 500-2000
Concentration	1 mg/ml
Purity	≥90%
Storage Stability	-20°C/1 year
Synonyms	
Observed Band	
Cell Pathway	Nucleus . Endoplasmic reticulum .
Tissue Specificity	Broadly expressed.
Function	catalytic activity:Ubiquitin C-terminal thioester + H(2)O = ubiquitin + a thiol.,caution:The RS447 megasatellite DNA is a highly polymorphic conserved tandem repetitive sequence which contains a copy of USP17. It is present with an interindividual variation in copy number and between 20 to 103 copies can be found both on chromosome 4 and chromosome 8.,caution:The RS447 megasatellite DNA is a highly polymorphic conserved tandem repetitive sequence which contains a copy of USP17. It is present with an interindividual variation in copy number and between 20 to 103 copies can be found in the genome both on chromosome 4 and chromosome 8.,function:Functions in cell apoptosis. Cleaves ubiquitin fusion protein substrates.,function:Functions in cell apoptosis. Cleaves ubiquitin fusion protein substrates. May also bind hyaluronan and RNA.,induction:Up-regulated by interleukin-4 and interleukin-6 (

Nanjing BYabscience technology Co.,Ltd



Background	DUB3 is a member of the ubiquitin processing protease (UBP) subfamily of deubiquitinating enzymes. See USP1 (MIM 603478) for background information.[supplied by OMIM, Mar 2008],
matters needing attention	Avoid repeated freezing and thawing!
Usage suggestions	This product can be used in immunological reaction related experiments. For more information, please consult technical personnel.

Products Images



Western blot analysis of lysates from HeLa cells, primary antibody was diluted at 1:1000, 4° over night