



SRBS2 rabbit pAb

Catalog No	BYab-12068
Isotype	IgG
Reactivity	Human; Mouse;Rat
Applications	WB
Gene Name	SORBS2 ARGBP2 KIAA0777
Protein Name	SRBS2
Immunogen	Synthesized peptide derived from human SRBS2 AA range: 794-844
Specificity	This antibody detects endogenous levels of SRBS2 at Human/Mouse/Rat
Formulation	Liquid in PBS containing 50% glycerol, 0.5% BSA and 0.02% sodium azide.
Source	Polyclonal, Rabbit,IgG
Purification	The antibody was affinity-purified from rabbit serum by affinity-chromatography using specific immunogen.
Dilution	WB 1: 500-2000
Concentration	1 mg/ml
Purity	≥90%
Storage Stability	-20°C/1 year
Synonyms	
Observed Band	
Cell Pathway	Cytoplasm, perinuclear region . Apical cell membrane . Cell junction, focal adhesion . Cell projection, lamellipodium . Found at the Z-disk sarcomeres, stress fibers, dense bodies and focal adhesion. In pancreatic acinar cells, localized preferentially to the apical membrane. Colocalized with vinculin and filamentous actin at focal adhesions and lamellipodia of pancreatic cells. .
Tissue Specificity	Abundantly expressed in heart. In cardiac muscle cells, located in the Z-disks of sarcomere. Also found, but to a lower extent, in small and large intestine, pancreas, thymus, colon, spleen, prostate, testis, brain, ovary and epithelial cells. In the pancreas, mainly expressed in acinar cells, duct cells and all cell types in islets (at protein level). Tends to be down-regulated in pancreatic adenocarcinomas and metastases.
Function	function:Adapter protein that plays a role in the assembling of signaling complexes, being a link between ABL kinases and actin cytoskeleton. Can form complex with ABL1 and CBL, thus promoting ubiquitination and degradation of ABL1 or with AKT1 and PAK1, thus mediating AKT1-mediated activation of PAK1.

Nanjing BYabscience technology Co.,Ltd



Isoform 6 increases water and sodium absorption in the intestine and gall-bladder.,PTM:Ubiquitinated by CBL.,similarity:Contains 1 SoHo domain.,similarity:Contains 3 SH3 domains.,subcellular location:Found at the Z-disk sarcomeres, stress fibers, dense bodies and focal adhesion.,subunit:Interacts with ABL, CBL, DNM1, DNM2, FLOT1, MLLT4/afadin, PTK2B/PYK2, SAPAP, SPTAN1, SYNJ1, SYNJ2, VCL/vinculin, and WASF (By similarity). Interacts with ABL1/c-Abl, ABL2/v-Abl/Arg, ACTN, AKT1, CBL, PALLD and PAK1.,tissue specificity:Abundantly expressed in heart. In cardiac muscle cells, located in the Z-d

Background

Arg and c-Abl represent the mammalian members of the Abelson family of non-receptor protein-tyrosine kinases. They interact with the Arg/Abl binding proteins via the SH3 domains present in the carboxy end of the latter group of proteins. This gene encodes the sorbin and SH3 domain containing 2 protein. It has three C-terminal SH3 domains and an N-terminal sorbin homology (SoHo) domain that interacts with lipid raft proteins. The subcellular localization of this protein in epithelial and cardiac muscle cells suggests that it functions as an adapter protein to assemble signaling complexes in stress fibers, and that it is a potential link between Abl family kinases and the actin cytoskeleton. Alternative splicing results in multiple transcript variants encoding different isoforms. [provided by RefSeq, Jul 2008],

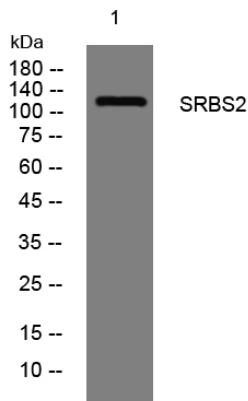
matters needing attention

Avoid repeated freezing and thawing!

Usage suggestions

This product can be used in immunological reaction related experiments. For more information, please consult technical personnel.

Products Images



Western blot analysis of lysates from HuvEc cells, primary antibody was diluted at 1:1000, 4° over night