



# SASH1 rabbit pAb

<b>Catalog No</b>	BYab-12061
<b>Isotype</b>	IgG
<b>Reactivity</b>	Human; Mouse
<b>Applications</b>	WB;IHC
<b>Gene Name</b>	SASH1 KIAA0790 PEPE1
<b>Protein Name</b>	SASH1
<b>Immunogen</b>	Synthesized peptide derived from human SASH1 AA range: 373-423
<b>Specificity</b>	This antibody detects endogenous levels of SASH1 at Human/Mouse
<b>Formulation</b>	Liquid in PBS containing 50% glycerol, 0.5% BSA and 0.02% sodium azide.
<b>Source</b>	Polyclonal, Rabbit,IgG
<b>Purification</b>	The antibody was affinity-purified from rabbit serum by affinity-chromatography using specific immunogen.
<b>Dilution</b>	WB 1:500-2000;IHC-p 1:50-300
<b>Concentration</b>	1 mg/ml
<b>Purity</b>	≥90%
<b>Storage Stability</b>	-20°C/1 year
<b>Synonyms</b>	
<b>Observed Band</b>	
<b>Cell Pathway</b>	Cytoplasm .
<b>Tissue Specificity</b>	Expressed ubiquitously, with highest levels in lung, placenta, spleen and thymus. Down-regulated in the majority (74%) of breast tumors in comparison with corresponding normal breast epithelial tissues. Expressed in the epidermis, epidermal keratinocytes, dermal fibroblasts and melanocytes (PubMed:23333244, PubMed:26203640).
<b>Function</b>	function:May have a role in a signaling pathway. Could act as a tumor suppressor.,similarity:Contains 1 SH3 domain.,similarity:Contains 2 SAM (sterile alpha motif) domains.,tissue specificity:Expressed ubiquitously, with highest levels in lung, placenta, spleen and thymus. Down-regulated in the majority (74%) of breast tumors in comparison with corresponding normal breast epithelial tissues.,

## Background

Nanjing BYabscience technology Co.,Ltd



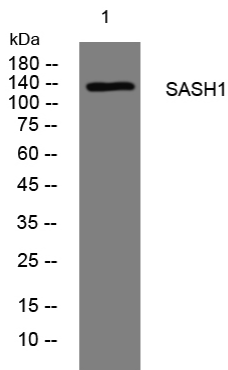
**matters needing attention**

Avoid repeated freezing and thawing!

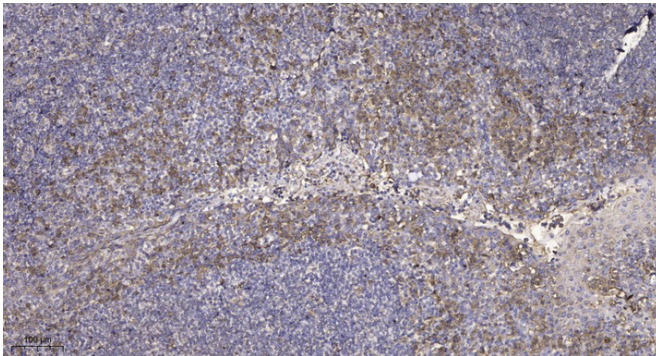
**Usage suggestions**

This product can be used in immunological reaction related experiments. For more information, please consult technical personnel.

**Products Images**



Western blot analysis of lysates from A431 cells, primary antibody was diluted at 1:1000, 4° over night



Immunohistochemical analysis of paraffin-embedded human tonsil. 1, Antibody was diluted at 1:200(4° overnight). 2, Tris-EDTA,pH9.0 was used for antigen retrieval. 3,Secondary antibody was diluted at 1:200(room temperature, 45min).