



# RAB3A rabbit pAb

<b>Catalog No</b>	BYab-12052
<b>Isotype</b>	IgG
<b>Reactivity</b>	Human; Mouse;Rat
<b>Applications</b>	WB;ELISA;IHC
<b>Gene Name</b>	RAB3A
<b>Protein Name</b>	RAB3A
<b>Immunogen</b>	Synthesized peptide derived from human RAB3A AA range: 27-77
<b>Specificity</b>	This antibody detects endogenous levels of RAB3A at Human/Mouse/Rat
<b>Formulation</b>	Liquid in PBS containing 50% glycerol, 0.5% BSA and 0.02% sodium azide.
<b>Source</b>	Polyclonal, Rabbit,IgG
<b>Purification</b>	The antibody was affinity-purified from rabbit serum by affinity-chromatography using specific immunogen.
<b>Dilution</b>	WB 1:500-2000;IHC-p 1:50-300; ELISA 2000-20000
<b>Concentration</b>	1 mg/ml
<b>Purity</b>	≥90%
<b>Storage Stability</b>	-20°C/1 year
<b>Synonyms</b>	
<b>Observed Band</b>	
<b>Cell Pathway</b>	Cytoplasm, cytosol . Lysosome . Cytoplasmic vesicle, secretory vesicle . Cell projection, axon . Cell membrane ; Lipid-anchor ; Cytoplasmic side . Cell junction, synapse, presynapse . Cell junction, synapse, postsynapse . Cycles between a vesicle-associated GTP-bound form and a cytosolic GDP-bound form. .
<b>Tissue Specificity</b>	Specifically expressed in brain.
<b>Function</b>	function:Involved in exocytosis by regulating a late step in synaptic vesicle fusion. Could play a role in neurotransmitter release by regulating membrane flow in the nerve terminal.,similarity:Belongs to the small GTPase superfamily. Rab family.,subunit:Heterodimer with RIMS2. Part of a ternary complex involving PCL0 and EPAC2. Interacts with RPH3A. Interacts with the exocyst complex through SEC15. Binds SYTL4, RIMS1 and RIMS2. Interacts with RAB3IP. Interacts with SGSM1 and SGSM3.,tissue specificity:Specifically expressed in brain.,

Nanjing BYabscience technology Co.,Ltd



## Background

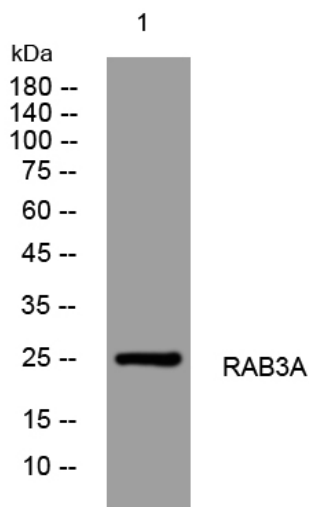
### matters needing attention

Avoid repeated freezing and thawing!

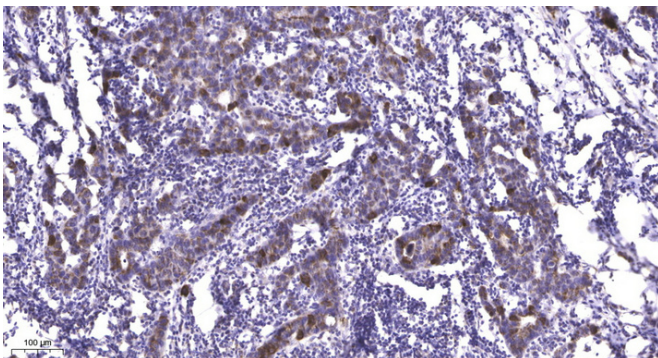
### Usage suggestions

This product can be used in immunological reaction related experiments. For more information, please consult technical personnel.

## Products Images



Western blot analysis of lysates from HpeG2 cells, primary antibody was diluted at 1:1000, 4° over night



Immunohistochemical analysis of paraffin-embedded human Breast cancer. 1, Antibody was diluted at 1:200(4° overnight). 2, Tris-EDTA, pH9.0 was used for antigen retrieval. 3, Secondary antibody was diluted at 1:200(room temperature, 45min).

Nanjing BYabscience technology Co.,Ltd

网址: [www.njbybio.com](http://www.njbybio.com)

官方热线: 025-5229-8998

监督电话: 15950492658