



# D106A rabbit pAb

<b>Catalog No</b>	BYab-12049
<b>Isotype</b>	IgG
<b>Reactivity</b>	Human;Rat;Mouse;
<b>Applications</b>	IHC;IF
<b>Gene Name</b>	DEFB106A BD6 DEFB106 DEFB6; DEFB106B
<b>Protein Name</b>	D106A
<b>Immunogen</b>	Synthesized peptide derived from human D106A AA range: 1-51
<b>Specificity</b>	This antibody detects endogenous levels of D106A at Human
<b>Formulation</b>	Liquid in PBS containing 50% glycerol, 0.5% BSA and 0.02% sodium azide.
<b>Source</b>	Polyclonal, Rabbit,IgG
<b>Purification</b>	The antibody was affinity-purified from rabbit serum by affinity-chromatography using specific immunogen.
<b>Dilution</b>	IHC-p 1: 50-200. IF 1:50-200
<b>Concentration</b>	1 mg/ml
<b>Purity</b>	≥90%
<b>Storage Stability</b>	-20°C/1 year
<b>Synonyms</b>	
<b>Observed Band</b>	
<b>Cell Pathway</b>	Secreted . Membrane . Associates with tumor cell membrane-derived microvesicles (PubMed:23938203). .
<b>Tissue Specificity</b>	Expressed specifically in epididymis and lung.
<b>Function</b>	function:Has antibacterial activity.,similarity:Belongs to the beta-defensin family.,tissue specificity:Expressed specifically in epididymis and lung.,
<b>Background</b>	Defensins form a family of antimicrobial and cytotoxic peptides made by neutrophils. Defensins are short, processed peptide molecules that are classified by structure into three groups: alpha-defensins, beta-defensins and theta-defensins. All beta-defensin genes are densely clustered in four to five syntenic chromosomal regions. Chromosome 8p23 contains at least two copies of the duplicated beta-defensin cluster. This duplication results in two identical copies of defensin, beta 106, DEFB106A and DEFB106B, in head-to-head orientation. This gene, DEFB106A, represents the more centromeric copy. [provided by RefSeq, Oct 2014],

Nanjing BYabscience technology Co.,Ltd



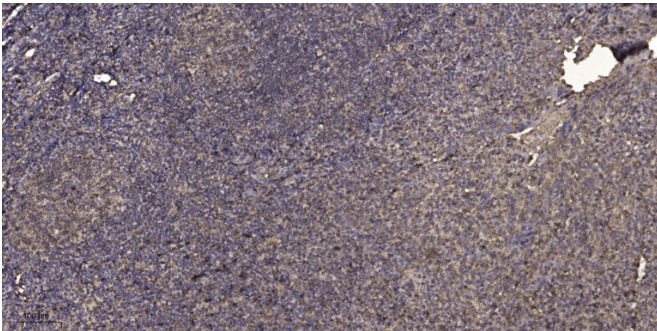
**matters needing attention**

Avoid repeated freezing and thawing!

**Usage suggestions**

This product can be used in immunological reaction related experiments. For more information, please consult technical personnel.

## Products Images



Immunohistochemical analysis of paraffin-embedded human tonsil. 1, Antibody was diluted at 1:200(4° overnight). 2, Tris-EDTA,pH9.0 was used for antigen retrieval. 3,Secondary antibody was diluted at 1:200(room temperature, 30min).