



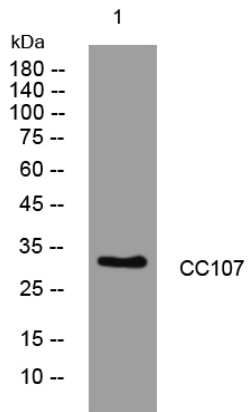
CC107 rabbit pAb

Catalog No	BYab-12048
Isotype	IgG
Reactivity	Human; Mouse
Applications	WB
Gene Name	CCDC107 PSEC0222
Protein Name	CC107
Immunogen	Synthesized peptide derived from human CC107 AA range: 133-183
Specificity	This antibody detects endogenous levels of CC107 at Human/Mouse
Formulation	Liquid in PBS containing 50% glycerol, 0.5% BSA and 0.02% sodium azide.
Source	Polyclonal, Rabbit,IgG
Purification	The antibody was affinity-purified from rabbit serum by affinity-chromatography using specific immunogen.
Dilution	WB 1: 500-2000
Concentration	1 mg/ml
Purity	≥90%
Storage Stability	-20°C/1 year
Synonyms	
Observed Band	
Cell Pathway	Membrane ; Single-pass membrane protein .
Tissue Specificity	
Function	
Background	This gene encodes a membrane protein which contains a coiled-coil domain in the central region. Multiple alternatively spliced transcript variants encoding different isoforms have been found for this gene. [provided by RefSeq, Jan 2013],
matters needing attention	Avoid repeated freezing and thawing!
Usage suggestions	This product can be used in immunological reaction related experiments. For more information, please consult technical personnel.

Nanjing BYabscience technology Co.,Ltd



Products Images



Western blot analysis of lysates from THP-1 cells,
primary antibody was diluted at 1:1000, 4° over night