



# EXOC4 rabbit pAb

<b>Catalog No</b>	BYab-12047
<b>Isotype</b>	IgG
<b>Reactivity</b>	Human; Mouse;Rat
<b>Applications</b>	WB
<b>Gene Name</b>	EXOC4 KIAA1699 SEC8 SEC8L1
<b>Protein Name</b>	EXOC4
<b>Immunogen</b>	Synthesized peptide derived from human EXOC4 AA range: 512-562
<b>Specificity</b>	This antibody detects endogenous levels of EXOC4 at Human/Mouse/Rat
<b>Formulation</b>	Liquid in PBS containing 50% glycerol, 0.5% BSA and 0.02% sodium azide.
<b>Source</b>	Polyclonal, Rabbit,IgG
<b>Purification</b>	The antibody was affinity-purified from rabbit serum by affinity-chromatography using specific immunogen.
<b>Dilution</b>	WB 1: 500-2000
<b>Concentration</b>	1 mg/ml
<b>Purity</b>	≥90%
<b>Storage Stability</b>	-20°C/1 year
<b>Synonyms</b>	
<b>Observed Band</b>	
<b>Cell Pathway</b>	Midbody, Midbody ring . Cell projection . Colocalizes with CNTRL/centriolin at the midbody ring (PubMed:16213214). Localizes at the leading edge of migrating cells (By similarity). .
<b>Tissue Specificity</b>	
<b>Function</b>	function:Component of the exocyst complex involved in the docking of exocystic vesicles with fusion sites on the plasma membrane.,similarity:Belongs to the SEC8 family.,subunit:The exocyst complex is composed of EXOC1, EXOC2, EXOC3, EXOC4, EXOC5, EXOC6, EXOC7 and EXOC8.,
<b>Background</b>	The protein encoded by this gene is a component of the exocyst complex, a multiple protein complex essential for targeting exocytic vesicles to specific docking sites on the plasma membrane. Though best characterized in yeast, the component proteins and functions of exocyst complex have been demonstrated to be highly conserved in higher eukaryotes. At least eight components of the exocyst complex, including this protein, are found to interact with the actin

Nanjing BYabscience technology Co.,Ltd



cytoskeletal remodeling and vesicle transport machinery. The complex is also essential for the biogenesis of epithelial cell surface polarity. Alternate transcriptional splice variants, encoding different isoforms, have been characterized. [provided by RefSeq, Jul 2008],

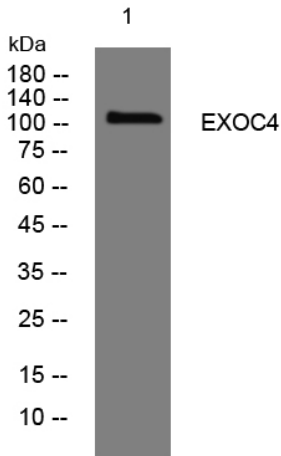
**matters needing attention**

Avoid repeated freezing and thawing!

**Usage suggestions**

This product can be used in immunological reaction related experiments. For more information, please consult technical personnel.

## Products Images



Western blot analysis of lysates from HuvEc cells, primary antibody was diluted at 1:1000, 4° over night