



LMCD1 rabbit pAb

Catalog No	BYab-12043
Isotype	IgG
Reactivity	Human; Mouse
Applications	WB;IHC
Gene Name	LMCD1
Protein Name	LMCD1
Immunogen	Synthesized peptide derived from human LMCD1 AA range: 270-320
Specificity	This antibody detects endogenous levels of LMCD1 at Human/Mouse
Formulation	Liquid in PBS containing 50% glycerol, 0.5% BSA and 0.02% sodium azide.
Source	Polyclonal, Rabbit,IgG
Purification	The antibody was affinity-purified from rabbit serum by affinity-chromatography using specific immunogen.
Dilution	WB 1:500-2000;IHC-p 1:50-300
Concentration	1 mg/ml
Purity	≥90%
Storage Stability	-20°C/1 year
Synonyms	
Observed Band	
Cell Pathway	Cytoplasm . Nucleus . May shuttle between the cytoplasm and the nucleus. .
Tissue Specificity	Expressed in the heart (at protein level). Expressed in many tissues with highest abundance in skeletal muscle.
Function	similarity:Contains 1 PET domain.,similarity:Contains 2 LIM zinc-binding domains.,subunit:Interacts with beta-dystroglycan.,tissue specificity:Expressed in many tissues with highest abundance in skeletal muscle.,
Background	This gene encodes a member of the LIM-domain family of zinc finger proteins. The encoded protein contains an N-terminal cysteine-rich domain and two C-terminal LIM domains. The presence of LIM domains suggests involvement in protein-protein interactions. The protein may act as a co-regulator of transcription along with other transcription factors. Alternate splicing results in multiple transcript variants of this gene. [provided by RefSeq, May 2013],

Nanjing BYabscience technology Co.,Ltd



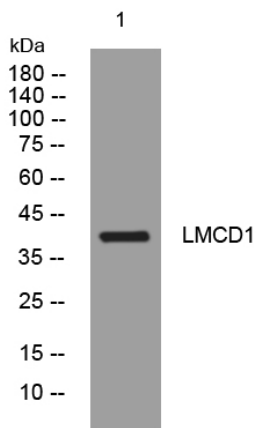
matters needing attention

Avoid repeated freezing and thawing!

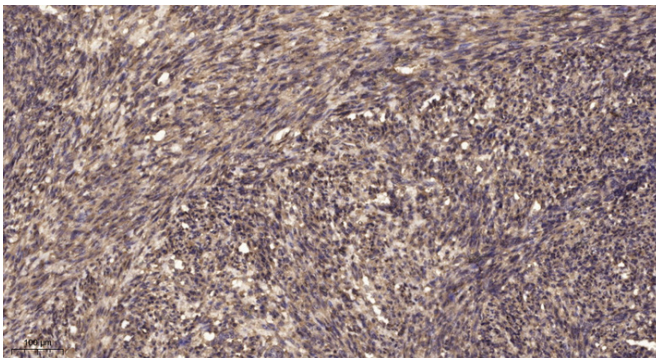
Usage suggestions

This product can be used in immunological reaction related experiments. For more information, please consult technical personnel.

Products Images



Western blot analysis of lysates from SW480 cells, primary antibody was diluted at 1:1000, 4° over night



Immunohistochemical analysis of paraffin-embedded human uterus. 1, Antibody was diluted at 1:200(4° overnight). 2, Tris-EDTA, pH9.0 was used for antigen retrieval. 3, Secondary antibody was diluted at 1:200(room temperature, 45min).