



RECQ5 rabbit pAb

Catalog No	BYab-12040
Isotype	IgG
Reactivity	Human;Rat;Mouse;
Applications	WB;ELISA;IHC
Gene Name	RECQL5 RECQ5
Protein Name	RECQ5
Immunogen	Synthesized peptide derived from human RECQ5 AA range: 647-697
Specificity	This antibody detects endogenous levels of RECQ5 at Human
Formulation	Liquid in PBS containing 50% glycerol, 0.5% BSA and 0.02% sodium azide.
Source	Polyclonal, Rabbit,IgG
Purification	The antibody was affinity-purified from rabbit serum by affinity-chromatography using specific immunogen.
Dilution	WB 1:500-2000;IHC-p 1:50-300; ELISA 2000-20000
Concentration	1 mg/ml
Purity	≥90%
Storage Stability	-20°C/1 year
Synonyms	
Observed Band	
Cell Pathway	[Isoform Beta]: Nucleus, nucleoplasm . Nucleus . Recruited to sites of DNA damage, such as single-strand breaks and inter-strand cross-links, and at stalled replication forks. Re-localizes from the nucleolus into the nucleus after replicative stress and significantly associates with WRN during S-phase (PubMed:23180761). .; [Isoform Alpha]: Cytoplasm .; [Isoform Gamma]: Cytoplasm .
Tissue Specificity	Ubiquitous.
Function	function:May have an important role in DNA metabolism.,similarity:Belongs to the helicase family. RecQ subfamily.,similarity:Contains 1 helicase ATP-binding domain.,similarity:Contains 1 helicase C-terminal domain.,subunit:Interacts with TOP3A and TOP3B.,tissue specificity:Ubiquitous.,
Background	The protein encoded by this gene is a helicase that is important for genome stability. The encoded protein also prevents aberrant homologous recombination by displacing RAD51 from ssDNA. Three transcript variants encoding different

Nanjing BYabscience technology Co.,Ltd



isoforms have been found for this gene. [provided by RefSeq, Jul 2011],

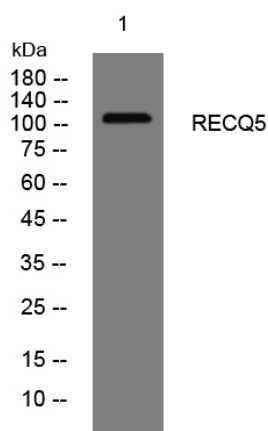
matters needing attention

Avoid repeated freezing and thawing!

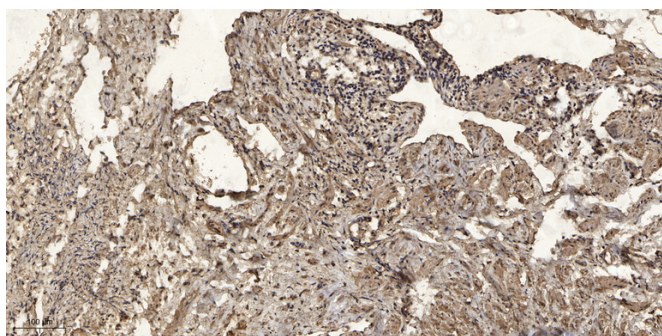
Usage suggestions

This product can be used in immunological reaction related experiments. For more information, please consult technical personnel.

Products Images



Western blot analysis of lysates from U2OS cells, primary antibody was diluted at 1:1000, 4° over night



Immunohistochemical analysis of paraffin-embedded human oophoroma. 1, Antibody was diluted at 1:200(4° overnight). 2, Tris-EDTA, pH9.0 was used for antigen retrieval. 3, Secondary antibody was diluted at 1:200(room temperature, 45min).