



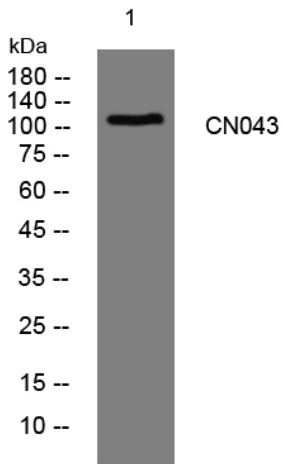
CN043 rabbit pAb

Catalog No	BYab-12034
Isotype	IgG
Reactivity	Human;Rat;Mouse;
Applications	WB
Gene Name	C14orf43 C14orf117
Protein Name	CN043
Immunogen	Synthesized peptide derived from human CN043 AA range: 518-568
Specificity	This antibody detects endogenous levels of CN043 at Human
Formulation	Liquid in PBS containing 50% glycerol, 0.5% BSA and 0.02% sodium azide.
Source	Polyclonal, Rabbit,IgG
Purification	The antibody was affinity-purified from rabbit serum by affinity-chromatography using specific immunogen.
Dilution	WB 1: 500-2000
Concentration	1 mg/ml
Purity	≥90%
Storage Stability	-20°C/1 year
Synonyms	
Observed Band	
Cell Pathway	Nucleus .
Tissue Specificity	
Function	similarity:Contains 1 ELM2 domain.,similarity:Contains 1 SANT domain.,
Background	
matters needing attention	Avoid repeated freezing and thawing!
Usage suggestions	This product can be used in immunological reaction related experiments. For more information, please consult technical personnel.

Nanjing BYabscience technology Co.,Ltd



Products Images



Western blot analysis of lysates from HpeG2 cells,
primary antibody was diluted at 1:1000, 4° over night