



TRI47 rabbit pAb

Catalog No	BYab-12016
Isotype	IgG
Reactivity	Human; Mouse
Applications	WB
Gene Name	TRIM47 GOA RNF100
Protein Name	TRI47
Immunogen	Synthesized peptide derived from human TRI47 AA range: 199-249
Specificity	This antibody detects endogenous levels of TRI47 at Human/Mouse
Formulation	Liquid in PBS containing 50% glycerol, 0.5% BSA and 0.02% sodium azide.
Source	Polyclonal, Rabbit,IgG
Purification	The antibody was affinity-purified from rabbit serum by affinity-chromatography using specific immunogen.
Dilution	WB 1: 500-2000
Concentration	1 mg/ml
Purity	≥90%
Storage Stability	-20°C/1 year
Synonyms	
Observed Band	
Cell Pathway	Cytoplasm . Nucleus .
Tissue Specificity	Low expression in most tissues. Higher expression in kidney tubular cells. Overexpressed in astrocytoma tumor cells.
Function	similarity:Belongs to the TRIM/RBCC family.,similarity:Contains 1 B box-type zinc finger.,similarity:Contains 1 B30.2/SPRY domain.,similarity:Contains 1 RING-type zinc finger.,tissue specificity:Low expression in most tissues. Higher expression in kidney tubular cells. Overexpressed in astrocytoma tumor cells.,
Background	
matters needing attention	Avoid repeated freezing and thawing!

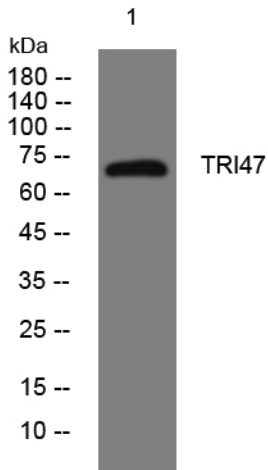
Nanjing BYabscience technology Co.,Ltd



Usage suggestions

This product can be used in immunological reaction related experiments. For more information, please consult technical personnel.

Products Images



Western blot analysis of lysates from AD293 cells, primary antibody was diluted at 1:1000, 4° over night.