



# STON2 rabbit pAb

<b>Catalog No</b>	BYab-12008
<b>Isotype</b>	IgG
<b>Reactivity</b>	Human; Mouse
<b>Applications</b>	WB;IF;FCM;ELISA;IHC
<b>Gene Name</b>	STON2 STN2 STNB
<b>Protein Name</b>	STON2
<b>Immunogen</b>	Synthesized peptide derived from human STON2 AA range: 47-97
<b>Specificity</b>	This antibody detects endogenous levels of STON2 at Human/Mouse
<b>Formulation</b>	Liquid in PBS containing 50% glycerol, 0.5% BSA and 0.02% sodium azide.
<b>Source</b>	Polyclonal, Rabbit,IgG
<b>Purification</b>	The antibody was affinity-purified from rabbit serum by affinity-chromatography using specific immunogen.
<b>Dilution</b>	WB 1:500-2000; IF/ICC 1:50-200;ELISA 1:2000-20000;IHC-p 1:50-200
<b>Concentration</b>	1 mg/ml
<b>Purity</b>	≥90%
<b>Storage Stability</b>	-20°C/1 year
<b>Synonyms</b>	
<b>Observed Band</b>	
<b>Cell Pathway</b>	Cytoplasm . Membrane . Cell junction, synapse, synaptosome . Some fraction is membrane-associated.
<b>Tissue Specificity</b>	Ubiquitous.
<b>Function</b>	domain:The Asn-Pro-Phe (NPF) motifs, which are found in proteins involved in the endocytic pathway, mediate the interaction with the EH domain of SYT1, SYT2, EPS15, EPS15R and ITSN1.,function:Adapter protein involved in endocytic machinery. May be involved in the vesicle recycling. May facilitate clathrin-coated vesicle uncoating.,similarity:Belongs to the Stoned B family.,similarity:Contains 1 MHD (mu homology) domain.,similarity:Contains 1 SHD (stonin homology) domain.,subcellular location:Some fraction is membrane-associated.,subunit:Interacts with the second C2 domain of synaptotagmins SYT1 and SYT2. Interacts with EPS15, EPS15R and ITSN1. Interacts indirectly with the AP-2 adapter complex.,tissue specificity:Ubiquitous.,

Nanjing BYabscience technology Co.,Ltd



### Background

This gene encodes a protein which is a membrane protein involved in regulating endocytotic complexes. The protein product is described as one of the clathrin-associated sorting proteins, adaptor molecules which ensure specific proteins are internalized. The encoded protein has also been shown to participate in synaptic vesicle recycling through interaction with synaptotagmin 1 required for neurotransmission. Multiple transcript variants encoding different isoforms have been found for this gene. [provided by RefSeq, Jan 2012],

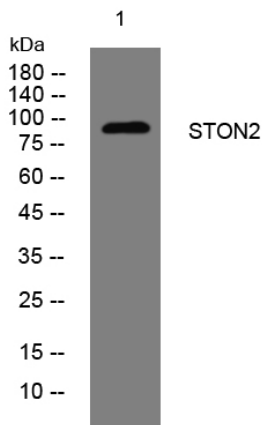
### matters needing attention

Avoid repeated freezing and thawing!

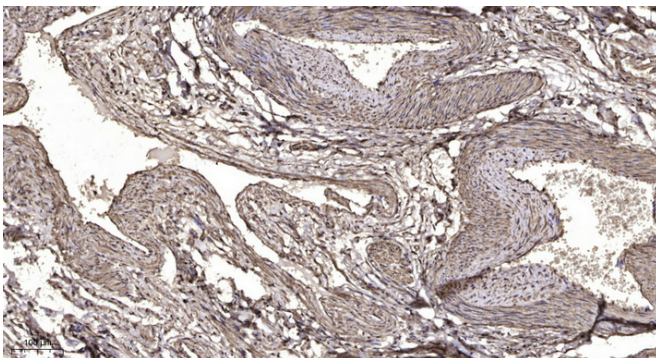
### Usage suggestions

This product can be used in immunological reaction related experiments. For more information, please consult technical personnel.

## Products Images



Western blot analysis of lysates from PC-12 cells, primary antibody was diluted at 1:1000, 4° over night



Immunohistochemical analysis of paraffin-embedded human oophoroma. 1, Antibody was diluted at 1:200(4° overnight). 2, Tris-EDTA, pH9.0 was used for antigen retrieval. 3, Secondary antibody was diluted at 1:200(room temperature, 45min).