



# PSA7 rabbit pAb

|                           |   |
|---------------------------|---|
| <b>Catalog No</b>         | BYab-11987  |
| <b>Isotype</b>            | IgG   |
| <b>Reactivity</b>         | Human; Mouse;Rat  |
| <b>Applications</b>       | WB;IHC  |
| <b>Gene Name</b>          | PSMA7 HSPC  |
| <b>Protein Name</b>       | PSA7  |
| <b>Immunogen</b>          | Synthesized peptide derived from human PSA7 AA range: 168-218   |
| <b>Specificity</b>        | This antibody detects endogenous levels of PSA7 at Human/Mouse/Rat  |
| <b>Formulation</b>        | Liquid in PBS containing 50% glycerol, 0.5% BSA and 0.02% sodium azide.   |
| <b>Source</b>             | Polyclonal, Rabbit,IgG  |
| <b>Purification</b>       | The antibody was affinity-purified from rabbit serum by affinity-chromatography using specific immunogen.   |
| <b>Dilution</b>           | WB 1:500-2000;IHC-p 1:50-300  |
| <b>Concentration</b>      | 1 mg/ml   |
| <b>Purity</b>             | ≥90%  |
| <b>Storage Stability</b>  | -20°C/1 year  |
| <b>Synonyms</b>           |   |
| <b>Observed Band</b>      |   |
| <b>Cell Pathway</b>       | Cytoplasm . Nucleus . Translocated from the cytoplasm into the nucleus following interaction with AKIRIN2, which bridges the proteasome with the nuclear import receptor IPO9. .  |
| <b>Tissue Specificity</b> |   |
| <b>Function</b>           | alternative products:Experimental confirmation may be lacking for some isoforms,catalytic activity:Cleavage of peptide bonds with very broad specificity.,function:The proteasome is a multicatalytic proteinase complex which is characterized by its ability to cleave peptides with Arg, Phe, Tyr, Leu, and Glu adjacent to the leaving group at neutral or slightly basic pH. The proteasome has an ATP-dependent proteolytic activity.,similarity:Belongs to the peptidase T1A family.,subunit:The 26S proteasome consists of a 20S proteasome core and two 19S regulatory subunits. The 20S proteasome core is composed of 28 subunits that are arranged in four stacked rings, resulting in a barrel-shaped structure. The two end rings are each formed by seven alpha subunits, and the two central rings are each formed by seven beta subunits.,subunit:The 26S proteasome consists of |

**Nanjing BYabscience technology Co.,Ltd**



a 20S proteasome core and two 19S

**Background**

The 26S proteasome is a multicatalytic proteinase complex with a highly ordered structure composed of 2 complexes, a 20S core and a 19S regulator. The 20S core is composed of 4 rings of 28 non-identical subunits; 2 rings are composed of 7 alpha subunits and 2 rings are composed of 7 beta subunits. Proteasomes are distributed throughout eukaryotic cells at a high concentration and cleave peptides in an ATP/ubiquitin-dependent process in a non-lysosomal pathway. This gene encodes a member of the peptidase T1A family that functions as a 20S core alpha subunit. The encoded protein interacts with the hepatitis B virus X protein and plays a role in regulating hepatitis C virus internal ribosome entry site (IRES) activity, an activity essential for viral replication. The encoded protein also plays a role in the cellular stress response by regulating hypoxia-inducible factor-1alpha. A pseudogene of this gene is located on the long arm of chromosome 9. [provided by RefSeq, Jul 2012],

**matters needing attention**

Avoid repeated freezing and thawing!

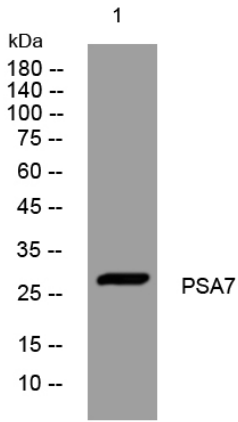
**Usage suggestions**

This product can be used in immunological reaction related experiments. For more information, please consult technical personnel.

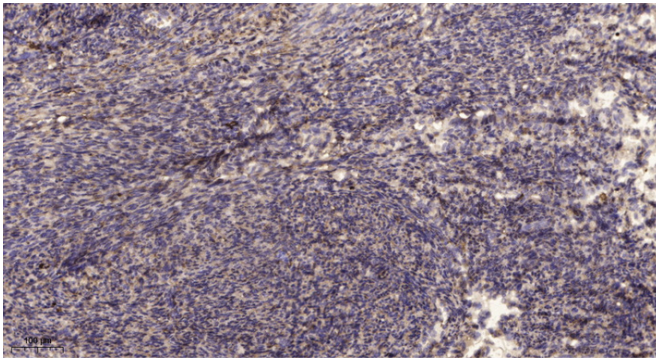
**Nanjing BYabscience technology Co.,Ltd**



## Products Images



Western blot analysis of lysates from HpeG2 cells, primary antibody was diluted at 1:1000, 4° over night



Immunohistochemical analysis of paraffin-embedded human uterus. 1, Antibody was diluted at 1:200(4° overnight). 2, Tris-EDTA,pH9.0 was used for antigen retrieval. 3,Secondary antibody was diluted at 1:200(room temperature, 45min).